

ATLAS

atlasbar.sg
@atlasbarsg



GIN & TONIC

The peerless G&T. An iconic refresher that evolved from a British colonial staple to a contemporary favourite.

ATLAS G&T elevated london dry gin, ATLAS burma tonic, fresh citrus <i>a bright and spirited classic for when the sun shines on london</i>	19
Gin Tonica american gin, bitter orange & elderflower tonic, bay leaf, lime <i>a fresh, herbaceous ode to spain, where gin and copa reign supreme</i>	23
Old Tom & Tonic english old tom gin, yuzu tonic, grapefruit <i>laced with woody spice, a union of flavours with a floral finish</i>	22
Sloe and Tonic german sloe gin, grapefruit & rosemary tonic, lime <i>a zesty, sweet sipper, a delightful english interpretation</i>	24
ATLAS Orange G&T ATLAS' very own orange gin, mediterranean tonic, orange <i>vibrant and aromatic, a passionate tribute to a classic cocktail staple</i>	24

GIN TOWER EXPERIENCE

Journey up the hallowed steps to the ATLAS Gin Tower for an up-close look at the remarkable ATLAS Gin Collection. Led by one of our talented bartenders as your intrepid guide, you will handpick a gin of your choice for an in-depth experience. Enjoy a tasting and presentation of your chosen gin, followed by a custom paired G&T.

starts from
54 per guest

*for more information and availability, please approach a member of our staff
(two guest minimum)*

For the complete Gin journey, please ask for the ATLAS Collections menu.



ATLAS CLASSICS

Our very own modern take on the stalwarts of cocktails.
An homage to where it all began.

ATLAS Martini	25
london dry gin, ambrato vermouth, orange bitters, champagne vinegar <i>strong, cold, floral, with a little lick of the wild</i>	
Orange Blossom Martini	28
ATLAS' very own orange gin, blanc vermouth, chocolate bitters, mint <i>herbaceous with hints of chocolate and orange</i>	
ATLAS Espresso Martini	24
vodka, coffee liqueur, espresso, cream <i>creamy, bold, with a lift of caffeine</i>	

AN ATLAS SUITE

Enjoy all three modern adaptations of the iconic Martini in one flight,
and savour this symbol of cocktail elegance.

three petite martinis

38



ATLAS Gimlet	25
scottish gin, fino sherry, triple citrus cordial, lime, salt <i>refreshingly tart with a dash of saline, a reimagining of a classic</i>	
ATLAS French 75	25
london dry gin, lemon, peach, salt, champagne <i>bright, elegant and vivacious, a stone fruit twist on the classic</i>	



ATLAS VINTAGE

ATLAS is a dedication to the glamour, sophistication and discernment of a time gone by.
ATLAS Vintage is a celebration of gin antiquity through the lens of our vintage and rare collection.
An opportunity to taste a little piece of history.

Vintage Martini

gin from the decade of your choice, mixed to your specifications
*travel back in time to taste gins from the dawn of the 20th century,
through the interbellum and into modern times*

1910s	250
1920s	225
1930s	200
1940s	175
1950s	150
1960s	125
1970s	100
1980s	75
1990s	50

Vintage Negroni

1930s london dry gin, italian sweet vermouth, vintage campari
a spirited iteration of count camillo negroni's cocktail of choice

250

Vintage White Lady

1960s london dry gin, vintage cointreau, lemon
a delicate spectre, that packs a citrus punch

200



“THE CHARM OF HISTORY AND ITS ENIGMATIC LESSON CONSIST
IN THE FACT THAT, FROM AGE TO AGE, NOTHING CHANGES AND
YET EVERYTHING IS COMPLETELY DIFFERENT.”

Aldous Huxley



LA GRANDE NATION

AN INVITATION

Paris 1925: As societal norms crumble in the face of the new, enter a world where discovery and decadence give birth to an aesthetic revolution we now know as Art Deco.

BON VOYAGE!



MONTROSE



PARIS 1925

EXPOSITION INTERNATIONALE
DES ARTS DÉCORATIFS
ET INDUSTRIELS
MODERNES
AVRIL-OCTOBRE

1925 - The Promise of Progress

Aboard the SS Normandie, Cecil Beaumont impatiently searched for signs of Paris on the horizon. It would be his first European adventure, a début as chief tastemaker of The Montrose.

Mr Beaumont was guest of honour at the gala opening of the Exposition Internationale des Arts Décoratifs et Industriels Modernes. The Expo is anticipated to set global trends ablaze in architecture, interior decoration, furniture, glass and jewellery, by premiering a Style Moderne for the decorative arts. The stakes were high indeed for the French, who sought to re-establish themselves as La Grande Nation through this new aesthetic.

For the industrious Mr Beaumont, this was to be the trip of a lifetime. On deck, he poured over a portefeuille of clippings documenting a certain glassmaker, jeweller, graphic designer and painter he was eager to meet. A journalist of repute, Mr Beaumont was acquainted with the great and good of the French art scene - from afar. Now he'd live, breathe and - most importantly - drink, in the burgeoning artistic capital of the world. How better to write about a new wave of zeitgeist-defining design for those who could not make the trip?

Over the next fortnight, Mr Beaumont would document unforgettable encounters and experiences for his eager editor-in-chief back home.

the journey begins!





*Hotel Ritz,
15, Vendôme,
Paris*

"Zut alors!" exclaimed an elegant man I recognized immediately as master glassmaker René Lalique. As he combed his pockets for a key, I offered my room as temporary home for his mountain of boxes and a breathtaking blue vase hooked in his arm. "Glass is marvelous!" he confided, describing his 40-foot "Luminous Fountain," the centerpiece of The Fair. Monsieur Lalique has pioneered a method of producing stunning glassware on a commercial scale, bringing the art of glass sculptures to everyday people

Later, I found a delicate glass bell on my letter tray: the first of many keepsakes from Paris.

GRAINS. D'FRANCK
CORRECTION

EQUIPEZ VOTRE
CITROEN
avec les
**Flasques
LUMEN**
brevetés
POUR TOUTES MARCHES
LE JEU DE 3 FLASQUES
ALUMINIUM : 640 FR.
EN VENTE PARTOUT
chez LAPOSTOLLE, Commissaire
181, rue d'Amsterdam, Courbevoie

POSTICHES pour Dames et Messieurs
MARIUS HENG
33, rue Bergère, Paris-17^e
ORIGINAUX PERMANENTS - TEXTURES
CATALOGUE FRANCO SUR DEMANDE



COGNAC
FROMY
1710 (1875-1910) FONDÉUR 1875
1710

27. - EXPOSITION INTERNATIONALE des ARTS DECORATIFS
PARIS 1925



FONTAINE de René LALIQUE, Architecte A. P.



R LALIQUE

*Monsieur Lalique juxtaposes clear with frosted glass,
creating texture that induces wonderment.*

'Style Moderne' and the upcoming Expo is the talk of the city.
Paris is brimming with excitement.

À LA RECEPTION



Baroque Pearl

scottish gin, mango, clarified milk, cucumber, basil oil
a thin cloud of velvet sweetness and subtle freshness

22



Vendôme Spritz

japanese gin, triple citrus cordial, dry vermouth, grapefruit & rosemary tonic
a spritely, revitalising refresher with citrusy, herbal dryness

23



Luminous Fountain

peruvian blended pisco, egg white, cinnamon, pineapple, american absinthe
cooling tropical fragrance with baking spices, ever so spritzed

24



Dragonfly

blanco tequila, pepper, agave, french citrus liqueur, honeycomb, egg white
dulcet agave flecked with rich nuttiness and sharp, wood spice

25



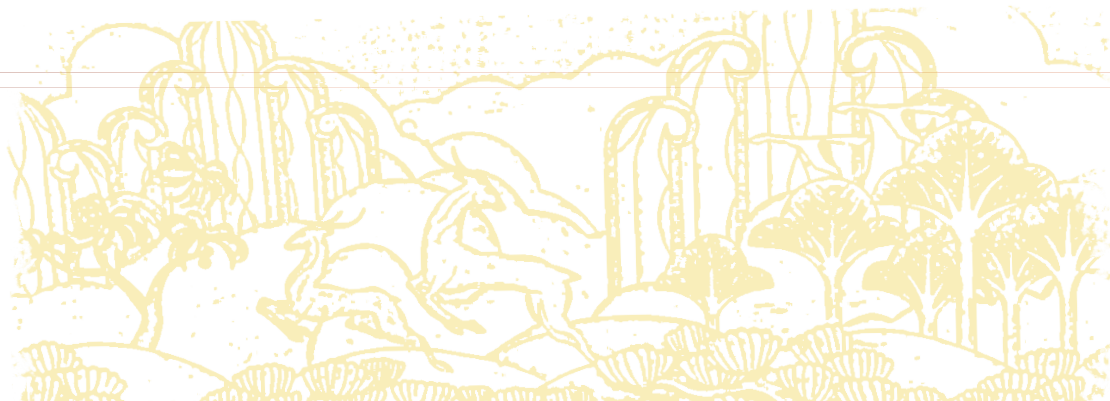
Summer in Paris NO ALCOHOL

chardonnay grape verjus, lemon berry tea, old world tonic
a sparkling medley of flavours, without wine & without gin

12

RENÉ LALIQUE

An art nouveau designer, Lalique pioneered techniques to sculpt glass on an industrial scale, transforming himself into a Style Moderne giant.



Belperron carefully studies her clients' lifestyle, face, complexion and hands, transforming an individual's jewellery into haute couture.



LE PARAVENT
ROBE DU SOIR. DE WORTH

N° 10 de la Gazette du Bon Ton.

LUSIVITÉ
ERIES
AYETTE

LE BAS "TIGRE"

LE PLUS SOLIDE DES BAS DE LUXE

N° 118.081. **BAS** pure soie des Cévennes, garantie sans charge de teinture, grand cuissard, baguette brodée, intérieur du revers, pointe et talon renforcés fil; se fait en noir, blanc, marine, acier, taupe, beige, acajou et mordoré. *La paire* **50.** »

e raiement cuir notre notice spéciale le bas "TIGRE" conserve ses exceptionnelles qualités de SOUPLESSE et de SOLIDITÉ.

N° 118.082. **3** soie artificielle, sans couture, haut et fil; se fait en noir, blanc, gris, beige et ocre. *La paire*. **11.25**

maille 1/2 fine et avec couture, blanc et couleur. *La paire*. **16.50**

soie naturelle avec baguette à jours, et semelle fil, maille fine. En noir, blanc fleur. *La paire* **22.50**

N° 118.083. **BAS** pure soie, maille fine, entièrement dimanché, grand revers, semelle renforcée, et baguette brodée. En noir. *La paire*. **33.** »

En maille plus forte, tout soie, baguette brodée, grand revers doublé, semelle entièrement renforcée. En noir, blanc et couleur. *La paire*. **39.** »

BAS soie, maille très fine, baguette à jours, grand revers doublé et semelle entièrement renforcée. En noir, blanc et couleur. **39.** »

MAISON FONDÉE EN 1857. Modèles et Catalogues séparés. Imp. de Mouton's, 7, rue Louvois, PARIS (2^e) - 8-22

AUX GALERIES LAFAYETTE

maison véritable le meilleur marché de tout Paris



I lunched with my wife's friend, the illustrious jeweler Suzanne Belperron, at the Expo Pavilion of Aux Galeries Lafayette. We entered "La Vie en Rose," a boudoir for the woman of taste. Black and silver marble was furnished in hues of pink. At its center laid a set of my host's creations, on loan from luminaries around the world.

The showstopper was a stunning emerald brooch. This would be the only time these pieces would be displayed, as Madame Belperron creates strictly on commission.

As we parted, she folded a charming chalcedony flower brooch into my hand, a gift for my wife.



II

"My style is my signature!" - Belperron

DU BONTON



Sainte-Claude

22

french wheat vodka, almond, peach liqueur, lemon, egg white
bright to the palate, pleasing to the eye, a supple dream



Pearl Revival

24

english gin, rose aperitif, spiced pear, calvados, thyme
a stirring blend of pudding spice, pome fruit and soft herb



The Lafayette

25

american single malt, salvadoran rum, lemon, apple cider, celery, cardamon
lively crisp greenness, preserved fruit and sweet damp wood



Noble Stone

27

singaporean gin, raspberry eau de vie, italian bitter, bianco vermouth
bracing, floral, bitter, berry stirred down until chilled



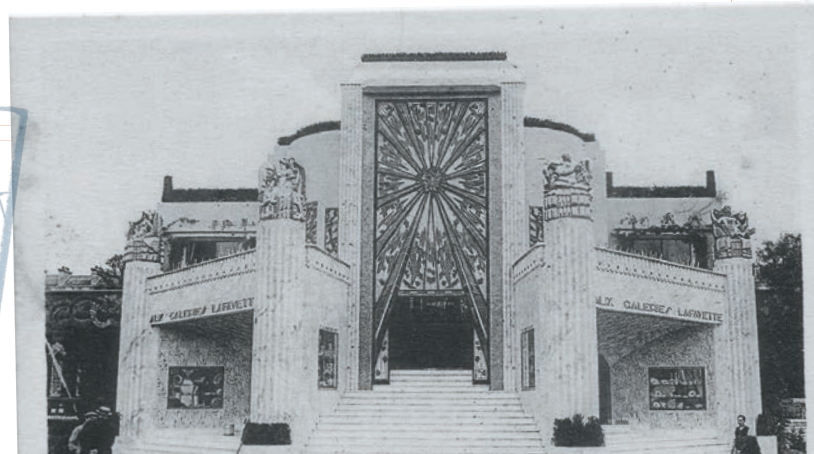
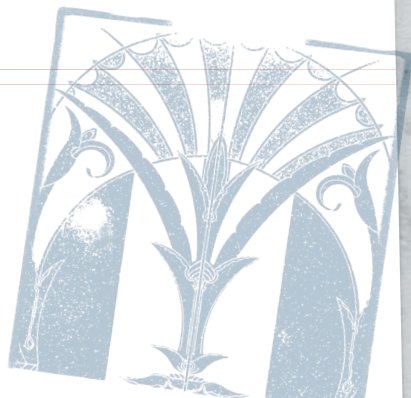
Suzanne's Style NO ALCOHOL

14

faux-italian bitter, rose cordial, grapefruit, lemon, orange
bright and glossy, soft with vibrant spring flora

SUZANNE BERPERRON

An avant-garde jeweller so original she never signed her pieces, Belperron was an unrivalled colourist most inspired by nature and cultures the world over.





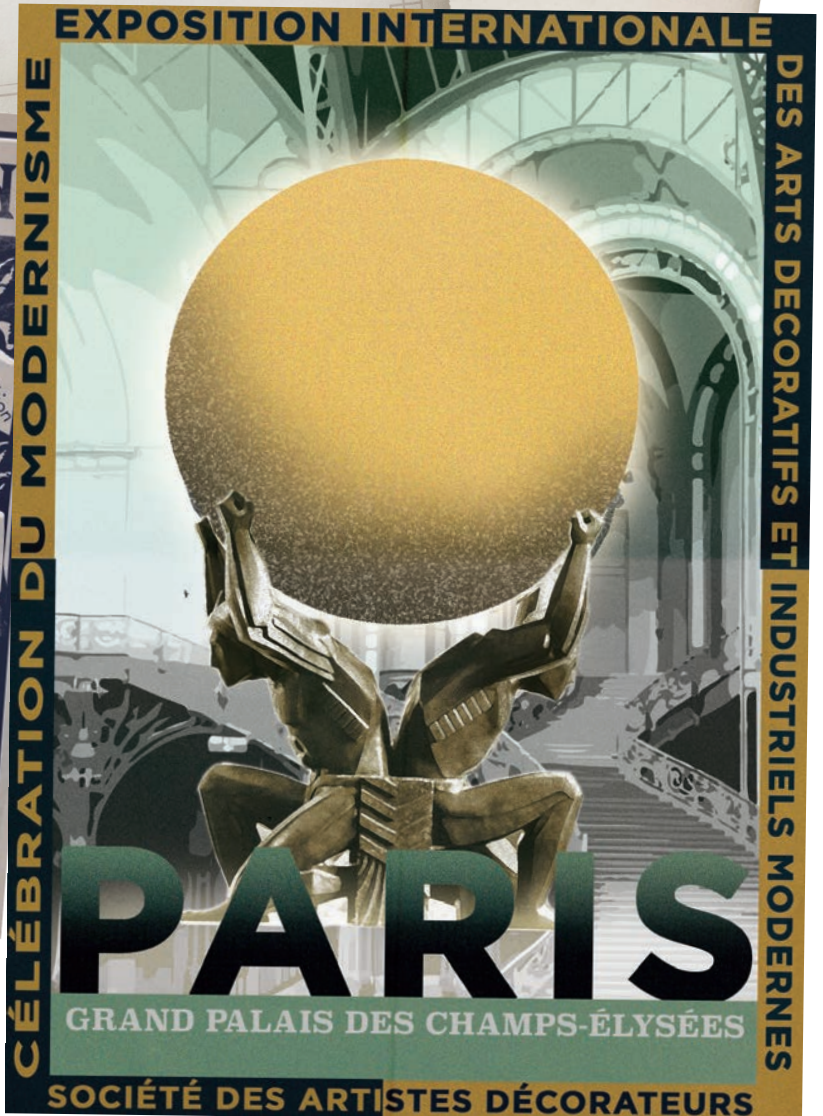
The gala invitation was etched in gold on textured paper. Emblazoned above was Atlas, hoisting the world: much like France, and the Arts.

At the Grand Palais, I was welcomed by A.M. Cassandre, designer of my prized invitation. We sat in the banquet hall, freely imbibing as the Paris Opéra, Folies Bergère and Moulin Rouge entertained us - all outshone by the 300 dancers of the "Ballet of Ballets."

At evening's end, Monsieur Cassandre accepted Le Grand Prix for Au Bûcheron: a poster featuring a woodsman brandishing his axe. My reclusive friend abandoned a napkin adorned with unusual typography: my souvenir of an event ushering a new era of progress.

LES DÉCORATEURS

vosse présence la



Thousands of people are anticipated to walk the sprawling grounds of the Expo in the upcoming weeks.

An opening gala was held within the Grand Palais. On display was an expression of a new style unseen before the exhibition, 'Style Moderne' establishing French design as the supreme.

STYLE MODERNE



Grand Palais

american gin, sage-infused dry vermouth, greek herbal liqueur, apricot
spiritous, aromatic herb stalk, sunshine on the forest floor

24



Nord Express

blended irish whiskey, peated single malt, strawberry shrub, soda
soft smoke, with candied fresh fruit and a brightened hue

23



A.M.'s Alliance

tomato-infused mezcal, oloroso sherry, italian bitter, chili tincture
a glistening ruby with a spiced, savoury kick

27



Bucheron

rye whiskey, italian bitter, oregano, aromatic bitters
toastiness, caramel and pepper canvas with dried leaves and spice

27



Graphique NO ALCOHOL

lemon, spiced honey apple, cardamom bitters, mint, soda
tart and spiced, a charming rhapsody

12

A.M. CASSANDRE

A cutting-edge graphic designer, his bold lines, imposing graphics and stylized strokes were modernity incarnate, embodying the adventurous spirit of luxury travel.



Madame de Lempicka's Four Nudes celebrates its subjects in full, provoking an egalitarian voyeurism.

SAVEZ -
CHANSON - S
Créée par Maurice CHEVALIER
dans la Revue du Ca

Paroles de
Albert WILLEMETZ
SAINT GRANIER &
Jean Le SEYEUX

Existe en disques
à saphir et di
à aiguille
FRANCIS SALA

Moderato $\frac{3}{4}$ Maurice

Par-don Mam

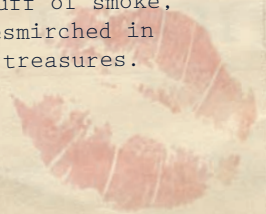


The euphoric opening continued at Le Jockey, an after-party already in full swing. Bejeweled provocatrices abandoned themselves to sensual rhythms: a scene that beckons with free-flowing cocktails and intrigue. Holding court in a blonde bob and imperious rouge: the "Baroness with a Paintbrush." Tamara de Lempicka, a cigarette holder in one hand and champagne in the other, recounting her latest scandal d'amour.

Madame de Lempicka defies society's limitations by embracing freedom of expression. Taking a long pull, she exclaimed, "There are no miracles, only what you make." And, in a decadent puff of smoke, she disappeared, leaving a glass besmirched in lipstick for my trove of Parisian treasures.

en planter beaucoup
Maurice
Chevalier Où peut-on trou
trou - Ver, comment se

Copyright 1925 by Francis Salabert
International Copyright secured all righ
EDITIONS FRANCIS SALABERT, 35 B⁴ des C
107 Avenue Victor-Hugo, Paris
Vente en gros: Paris, 22 rue Chauchat (14. r



*on soupe - on rit - on chante
on danse - on s'amuse follement!*

OUVERT TOUTE LA NUIT



Dr. Boucard

26

olive oil-washed blended scotch, italian bitter, p.x. sherry, sweet vermouth
dried-grain robustness, fruit husks and sweet nuttiness



Blue Note Smoke

25

japanese gin, lemon, jasmine tea, peated smoke
a fun, blossomy delight with a blissful puff



Pink Kizette

24

venezuelan rum, haitian sugarcane spirit, rose aperitif, vetiver
delicate but fierce sweet fragrance, dessert-like sugar cane



The Musician

24

cognac, coconut cream, mint, cacao, chocolate bitters
arrive in a frost-like minty chocolate heaven



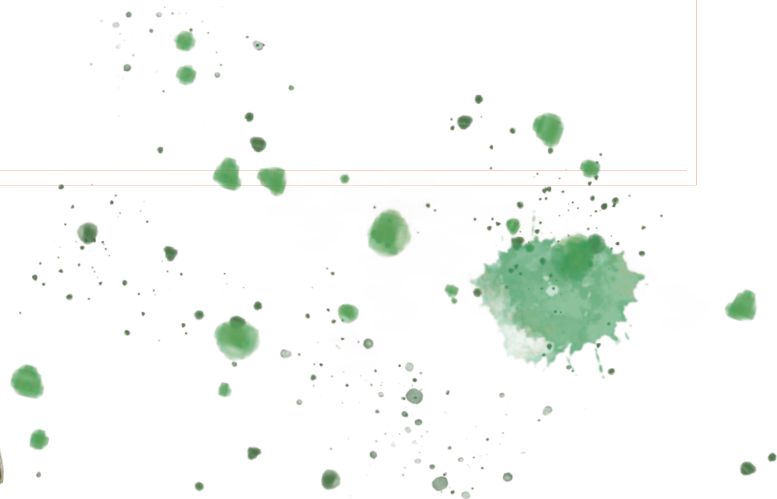
Key In Hand NO ALCOHOL

16

spiced no-alcohol spirit, sour plum, tomato water
alkali, savoury with a stone fruit tang

TAMARA DE LEMPICKA

Her provocative paintings defined the libertinism of the machine age. Drenched in sensuality, the portraits invite titillating relationships with her subjects.





4 - EXPOSITION INTERNATIONALE DES ARTS DECORATIFS - PARIS 1925



CARTE POSTALE

The Style Moderne became the epochal movement we call Art Deco. The innovations showcased at the 1925 Expo launched countless discoveries, explorations and experiments, fusing tradition and modernity into an inextricably twined aesthetic.

from the roaring 20's to this day, this progressive marriage endures.

Welcome to ATLAS.



80c
Ch
Unit

To the Editor-In-Chief

Draft: "LA GRANDE NATION" by Cecil Beaumont

Paris is the 20th-century, seemingly populated only by creativity. Each encounter reveals the passions of performers, artists, and designers exploring new ways to live.

The Exposition Internationale des Art Décoratifs et Industriels Modernes is the naissance of a global movement that marries modern style and fine craftsmanship with innovative materials. Form and function combine with wanton eclecticism, inspiring new explorations across borders.

Lalique's glass architecture, Belperron's jewelry, Cassandre's graphic design, and De Lempicka's paintbrush are but the tip of the Style Moderne iceberg.

During the day, the literati jostle for seats at cafés lining the Left Bank, exchanging discourse about a life less ordinary. In the afternoon, museums, bazaars and salons vie for attention. At night, champagne flows free, while dancing until morning is *de rigueur*.

Worshipping a new goddess of culture, Parisians are the purest hedonists, cutting loose in a machine age that embodies the promise of the future.

Progress itself is intertwined with creative expression, lifting artists to the forefront of society. Seeing and being seen is a way of life. Immersed in cultural explosion, I find myself irrevocably transformed: no longer belonging to one nation, but now a citizen of the world.

Yours Faithfully,

Cecil Beaumont



*133 East
Street,
New York,
NY 10012,
United States*





FINE CHAMPAGNE

For our ATLAS habitués, we propose a small selection of fine Champagnes to be drunk by the tulip, if not by the bottle.



BY THE GLASS

		Glass (125ml)	Bottle
Charles Heidsieck “Brut Réserve” Magnum <i>hazelnuts, toasty and a touch of yellow apples</i>	NV	22	240
Louis Roederer “Brut Premier” <i>refreshing, with elegant hints of floral notes</i>	NV	27	160
Piper-Heidsieck “Cuvée Réserve Essentiel” ATLAS <i>red apple, meyer lemon, crushed almond with chalky minerality</i>	NV	29	170
Roger Coulon “Rosélie” Rosé de Saignée <i>structured, ripe strawberries with a touch of spice</i>	NV	29	170

EXPRESSIONS OF CHAMPAGNE

embark on a voyage of discovery - enjoy a sparkling flight
of the effervescent nectar

four serves of 75ml

BY THE BOTTLE**Bottle**

Heidsieck & Co. Monopole "Goût Américain" Extra Dry
white peach, candied ginger with sweet pastry notes

NV

170

Drappier Rosé
lightly floral, hints of spice cake, good intensity

NV

170

Delamotte Blanc de Blancs
green apple and spring blossom, delicate with chalky minerality

NV

180

Tarlant "Zero" Brut Nature
refreshingly dry with citrus, pure with great finesse

NV

190

Ruinart Blanc de Blancs
satisfying citrus and white flowers with a lingering, mineral-laced finish

NV

240

Duval-Leroy "Authentis Bouzy" Blanc de Noirs Brut Nature
powerful on the nose, silky texture with great length

2005

280

Dom Pérignon
stone fruit and lightly toasted brioche, silky and dense

2008

450

Krug Grande Cuvée 167^{ème} édition
ripe apple aromas, hazelnut and nougat, flinty and citrusy finish

MV

460

Bollinger La Grande Année
notes of fresh almond and dried citrus, with a smooth chalky texture

2012

480

Louis Roederer "Cristal"
expressive nose of honey and oak, rich, long mineral freshness

2008

680

For the complete Champagne journey, please ask for the ATLAS Collections menu.



STILL WINES

While Champagne is our true vinous love, our enjoyment of all wines knows no bounds. Enjoy by the glass or bottle, as it suits your whimsy.



WHITE	Glass (150ml)	Bottle
Weingut Robert Weil Riesling Trocken 2018 Rheingau, Germany • Riesling <i>refreshing, packed with minerals and a touch of sweetness</i>	18	85
Louis Moreau Chablis 2018 Burgundy, France • Chardonnay <i>fresh, vivid, with hints of apple and fine salinity</i>	20	95
Domaine Regis Jouan Sancerre 2019 Loire Valley, France • Sauvignon Blanc <i>nose of citrus, a touch of white grapefruit and a crisp dry finish</i>	24	110
Mario Schiopetto Collio DOC 2017 Friuli Venezia Giulia, Italy • Pinot Grigio <i>aromatic exotic fruits, rose and delicious mineral tone</i>		110
Clos Henri Estate 2018 Marlborough, New Zealand • Sauvignon Blanc <i>vibrant limes and passion fruit, intensely refreshing and juicy</i>		120
Yves Cuilleron 'Les Vignes d'à Côté' 2018 Rhône Valley, France • Viognier <i>ripe honeyed pear and apricots, impeccable balance with a lick of citrus</i>		120
Henri Bourgeois La Demoiselle de Bourgeois Pouilly-Fumé 2015 Loire Valley, France • Sauvignon Blanc <i>rich, densely textured and full of white and green fruit</i>		150
Lucien Le Moine Bourgogne Blanc 2015 Burgundy, France • Chardonnay <i>apples and citrus, opulent and round with a lingering finish</i>		160

ROSÉ	Glass (150ml)	Bottle
Studio by Miraval Rosé 2018 IGP de Méditerranée , France • Cinsault, Grenache, Rolle, Tibouren <i>silky-textured and pale pink, subtly tangy with red fruits</i>	16	75
RED		
Tenimenti Mancini 'Podere della Filandra' Chianti DOCG 2018 Tuscany, Italy • Sangiovese <i>fresh juicy cherries, black berries and a supple tannin structure</i>	18	85
Domaine Faiveley Bourgogne 2018 Burgundy, France • Pinot Noir <i>bright, light bodied with a vibrant burst of red fruits</i>	20	95
Château Rouchet Médoc 2014 Bordeaux, France • Merlot <i>medium body, notes of plums and cherries, elegant tannins</i>	24	110
Château Béchereau Lalande de Pomerol 2014 Bordeaux, France • Cabernet Franc, Merlot <i>jammy fruits and cloves, full-bodied with nuances of blackcurrant and pepper</i>		135
R. López de Heredia Viña Tondonia Reserva Rioja 2007 Rioja, Spain • Tempranillo, Garnacha, Mazuelo, Graciano <i>macerated strawberries, autumn bonfires and gentle vanilla notes</i>		150
Waits-Mast Mariah Vineyard 2015 Mendocino Ridge, USA • Pinot Noir <i>a core of black cherry and earth, spicy and oaky with soft tannins</i>		170
Prunotto Barolo DOCG 2016 Piedmont, Italy • Nebbiolo <i>saturated and rich with spiced aromas, a finish of refined tannins</i>		180
Château La Nerthe Châteauneuf du Pape 2016 Rhone Valley, France • Grenache, Syrah, Mourvèdre <i>alluring red florals, red berries and light, herbal accents, plush and plump</i>		200

For the complete wine journey, please ask for the ATLAS Collections menu.



BARLEY, HOPS & APPLES

A sharp selection of classic English and European beers and cider.
A mix of the old and the new.



Pilsner Urquell from the Tap <i>fragrant with flowery, herbal hop aromas</i>	450 ml	4.4%	16
Beardo IPA <i>full-bodied with a fruity, citrus zing</i>	330ml	6.0%	19
St. Bernardus Tripel <i>complex and rich, blonde with velvety-soft head of froth</i>	330ml	8.0%	24
Saison Dupont Belgium Farmhouse Ale <i>coppery blonde and particularly aromatic, refreshingly bitter</i>	330ml	6.5%	20
Marston's Pearl Jet Stout <i>smooth with notes of chocolate, coffee and sweet treacle</i>	500ml	4.5%	21
Thatchers Gold Cider <i>crisp and fruity with a slight tartness</i>	500ml	4.8%	23



“BEER, IF DRANK WITH MODERATION, SOFTENS THE TEMPER,
CHEERS THE SPIRIT, AND PROMOTES HEALTH.”

– Thomas Jefferson



SODAS, TONICS & FRUITS

Perfect companions to our spirits or refreshing on their own.



SOFTS

East Imperial	8
Soda Water / Ginger Beer / Thai Ginger Ale	
Coca Cola	7
Regular / Light / Zero	
Sprite	7
Housemade Kombucha	8

TONICS

East Imperial	8
ATLAS Burma / Old World / Yuzu / Royal Botanic	
Fever Tree	8
Mediterranean	
London Essence	8
Grapefruit & Rosemary / Bitter Orange & Elderflower	

JUICE

Fresh pressed	8
Orange / Grapefruit / Pineapple / Apple	

MINERAL WATER

San Pellegrino	750ml	11
Aqua Panna	750ml	11



ATLAS WATER

We are committed to reducing our carbon footprint. Our in-house water filtering system ensures the purest water we can serve whilst retaining beneficial mineral salts. Your choice of free flow still and sparkling water for \$2 per guest. \$1 per guest will be donated to a local charity.



LEAVES, OOLONGS & TISANES

Our tea master proposes a selection of classic and exotic teas from around the world. All teas are loose leaf.



The ATLAS Art Deco Blend	10
<i>blended just for us, a fine black tea incorporating dry gin botanicals</i>	
Royal English Breakfast	8
<i>a vibrant blend of milima, kenilworth and assam dejuo</i>	
Regal Earl Grey	8
<i>premium mild tea blended with organic vanilla & bergamot</i>	
Aromatherapy In A Cup	8
<i>an infusion of flowers and mint with sweet lemon balm</i>	
Majestic Mint	8
<i>sweet menthol, spearmint and peppermint, a refreshing blend</i>	
Red Rooibos	8
<i>natural sweet and earthy tones, rooibos and delicate lemon verbana</i>	
Peach Green Oolong	12
<i>a blend of green tea and peach notes with overtones of hibiscus</i>	
Jasmine Pearls	12
<i>one of the finest chinese jasmine teas</i>	
Pai Mu Dan	12
<i>exquisite white tea, floral, fresh green aroma, a touch of forest</i>	
Palace Grade Pu'er	12
<i>a vintage black tea pu-erh, sweet honey, earthy and nutty</i>	
Milk Oolong	12
<i>creamy and light golden, with a hint of butter</i>	



BEANS, CHAI & CHOCOLATE

Proudly roasted in Singapore by Liberty Coffee, the “Speakeasy” blend is full-bodied with a dark chocolate base note and complex bittersweetness.



Espresso <i>black, strong</i>	4
Long Black <i>black, strong</i>	4
Americano <i>black, balanced</i>	4
Piccolo Latte <i>milk, strong</i>	5
Atlas Gibraltar <i>milk, strong</i>	5
Flat White <i>milk, mild</i>	6
Latte <i>milk, mild</i>	6
Cappuccino <i>milk, balanced</i>	6
Mocha Latte <i>milk, balanced</i>	7
Iced Long Black <i>black, strong</i>	5
Iced White <i>milk, mild</i>	6
Iced Mocha <i>milk, balanced</i>	7
Drinking Chocolate <i>milk, sweet</i>	7
Seven Spice Chai Latte <i>milk, sweet</i>	7

Additional Espresso Shot +2

Soy or Oat Milk +1