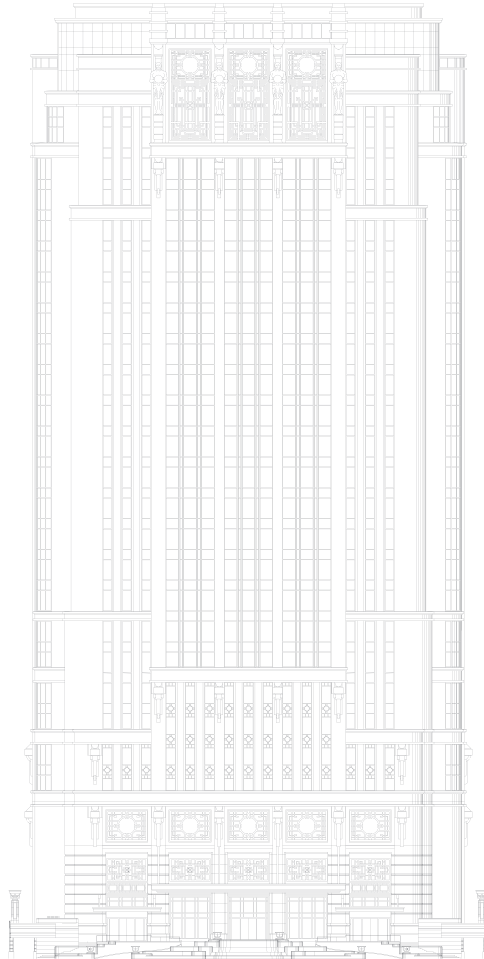




ATLAS

THE ATLAS COLLECTIONS

VOLUME 1





Dear Guests,

Welcome to ATLAS - a labour of love that honours my grandfather, CS Hwang, the late founder of Parkview Group, and the beautiful space he created in which ATLAS resides. It is our hope that your experience at ATLAS reflects the passion and attention that has gone into every aspect of its creation. A grand and beautiful space, we invite you to unwind, enjoy, celebrate and indulge as our talented and dedicated ATLAS team makes you feel most welcome and at home.

The ATLAS Collections feature two of the world's most remarkable physical collections of Gin and Champagne. Building the ATLAS Collections was a monumental task which took over two years to curate and assemble. We are also delighted to feature a selection of rare and exceptional still wines and whiskies from my own family's private cellar, which for the first time since its inception almost 40 years ago, has been opened especially for our guests at ATLAS.

Building upon the modest collection of wines started by my grandfather, the Parkview Family Cellar found a permanent home in 1989 with the opening of the Parkview Group's flagship property, Hong Kong Parkview. Initially consisting of a small collection of 50 bottles of right bank Bordeaux wines, the collection grew steadily under the stewardship of my uncle, George Wong, and his son Alex.

By 2000, the collection was at 3,000 bottles and has now expanded beyond the right bank to other regions in France and the rest of the world. Currently, the collection stands at 50,000 bottles of fine wine and over 10,000 bottles of whiskey acquired through reputable merchants, auctions, and numerous trips to the wineries and distilleries where suppliers have now become close friends, ensuring that the family always has access to the finest and rarest bottles.

For those who share our genuine passion for fine wines and spirits, a small but special sampling of the bottles from the Parkview Family Cellar have been brought to ATLAS for you to enjoy. We hope that you are able to try things here that you would otherwise not find; and that you will enjoy our treasures as much as we have enjoyed collecting them and sharing them with you.

Warmest regards,

Vicky Hwang

CONTENTS

THE ATLAS GIN COLLECTION

Argentina
Australia
Austria
Belgium
Bolivia
Brazil
Canada
Channel Islands
Colombia
Czech Republic
Denmark
England
Estonia
Finland
France
Germany
Greece
Iceland
India
Ireland
Italy
Japan
Liechtenstein
Luxembuorg
Mexico
Moldova
Netherlands
New Zealand
Peru
Norway
Portugal
Russia
Scotland
Slovakia
Spain
South Africa
Spain
Sri Lanka
Sweden
Switzerland

Thailand
United States of America
Wales
Rare Collectibles

THE ATLAS CHAMPAGNE COLLECTION

La Sélection
Le Terroir
La Prestige
Les Collections

FINE SPIRITS OF THE WORLD

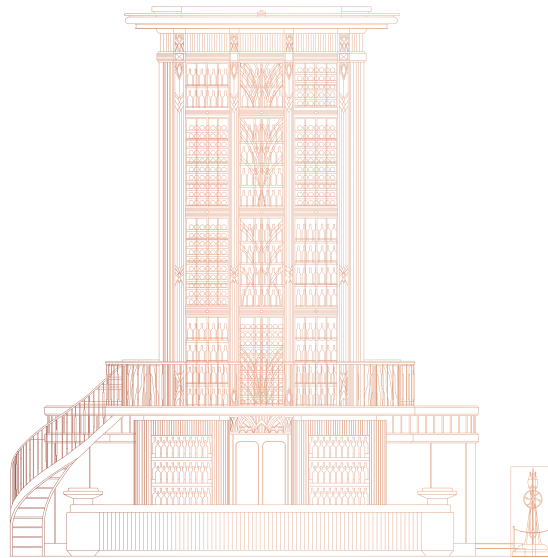
Whisk(e)y
Brandy
Sugarcane
Agave
Vodka
Absinthe
Vermouth
Aperitif
Digestif
Liqueur

FINE WINES OF THE WORLD

White Selection
Red Selection
White Collection
Red Collection

The □ symbol denotes special bottles from the Family Collection.

THE ATLAS GIN COLLECTION



Gin; a clear alcoholic spirit distilled from grain and flavoured with juniper berries (and other botanicals). The name is derived from the French genièvre or the Dutch jenever, which both mean juniper.

Juniper; an evergreen, dioecious shrub that grows all throughout the Northern Hemisphere. It produces a long ripening berry that when dried can impart a piney, citrusy, floral aroma and flavour.



Welcome to the ATLAS Gin Collection; a labour of love that has involved collecting, carefully curating and cataloguing the entire world of gin. Our aspiration is to introduce our guests to the beauty and wonder of this incredible spirit.

Gin is liquid history. From the tombs of ancient Egypt, the monasteries of the Middle Ages, the laneways of the Industrial Revolution, through Prohibition and to the current Second Golden Age of fine drinking, gin has been drunk by all classes and in all corners of the globe. For over two millennia juniper berries have been used for ritual, medicinal and gastronomic purposes. For almost 1,000 years, this unique botanical has been used in fine beverages, namely gin.

Gin is provenance; it looks to the natural world for flavour, aroma and sensation. Gin is the quintessential cocktail ingredient, and since the turn of the twentieth century has been a bartender's favourite cocktail spirit. It is a beacon for sophistication and style, yet is founded upon mayhem and grit. Gin is a delicious spirit; it runs the gamut of fresh, vibrant and zesty, to floral, soft and delicate. It can be robust and bracing, it can be savoury and spiced.

Here at ATLAS, we are delighted to share one of the world's finest collections of gin with you. We have arranged our gins by country of origin, but therein lies numerous styles, botanicals and expressions of the juniper spirit. Our passionate and dedicated gin team stands ready to assist you in your gin journey.

Jason Williams, Master of Gin

Jonathan 'Bravo' Teo, Gin Researcher

Roman Foltán, Head Bartender

The ATLAS Gin Collection

Argentina (1)	Liechtenstein (1)
Australia (79)	Luxembourg (2)
Austria (4)	Mexico (2)
Belgium (56)	Moldova (1)
Bolivia (1)	Netherlands (68)
Brazil (1)	New Zealand (11)
Canada (35)	Norway (3)
Channel Islands (1)	Peru (2)
Colombia (2)	Portugal (12)
Czech Republic (5)	Russia (1)
Denmark (5)	Scotland (57)
England (268)	Slovakia (1)
Estonia (1)	South Africa (38)
Finland (5)	Spain (73)
France (21)	Sri Lanka (1)
Germany (52)	Sweden (15)
Greece (1)	Switzerland (11)
Iceland (6)	Thailand (4)
India (1)	United States of America (106)
Ireland (13)	Wales (10)
Italy (13)	Rare & Collectible (38)
Japan (3)	

THE 'GIN RATION' DECREE

The ATLAS Gin Collection is a rare and special treasure, designed to be enjoyed by all. As such, we must insist on a Gin Ration, just like the old days in the Royal Navy in the United Kingdom. For the special gins in our collection – those where only one or two bottles have been carried from afar - guests are allowed just one pour of each gin per visit to ATLAS.

If you love gin as much as we do, or would like to taste even more of the rare gins that arrive at ATLAS, please ask about becoming a member of our Juniper Society.

◊ denotes gins that are subject to the Gin Ration.

ARGENTINA (1)



◇ Principe De Los Apostoles Mate Gin	40%	24
--------------------------------------	-----	----

AUSTRALIA (79)



◇ 313 Dry Gin	40%	24
◇ 313 Dry Wattleseed Gin	40%	24
◇ 78 Degrees Gin	42%	22
◇ Animus Ambrosian Gin	50%	26
◇ Animus Classic Dry Gin	50%	26
◇ Antipodes Gin	45%	26
◇ Applewood Distillery Gin	43%	22
Archie Rose ATLAS Tailored Orange Gin	42%	22

Archie Rose ATLAS Tailored Orange Gin

A bespoke gin created for ATLAS by our friends at the Archie Rose Distillery in Sydney, Australia. Inspired by orange-heavy gins and classic orange-scented cocktails from the early 1900's. This gin tastes and smells like delicious spiced orange cake. Try this in our classic Great Jeweller cocktail – stirred with Green Chartreuse, sweet vermouth and orange bitters.

◇ Archie Rose Distillers Strength Gin	52.4%	26
◇ Archie Rose Horisumi Autumn Gin	44%	30
◇ Archie Rose Horisumi Spring Gin	44%	30
◇ Archie Rose Horisumi Winter Gin	44%	30
◇ Archie Rose Signature Dry Gin	42%	22
◇ Artemis Gin	44%	26
◇ Bass & Flinders Angry Ant Gin	40%	26
◇ Bass & Flinders Gin 10 Wild and Spicy Gin	40%	28
◇ Bass & Flinders Monsoon Gin	40%	28
◇ Bass & Flinders Soft and Smooth Gin	40%	28
◇ Blind Tiger Organic Gin	42.7%	22

◇ Botanic Australis Gin	40%	22
◇ Botanic Australis Navy Strength Gin	57%	24
◇ Brookies Byron Dry Gin	46%	22
◇ Distillery Botanica Gin	42%	22
◇ Forty Spotted Rare Tasmanian Gin	40%	24
◇ Forty Spotted Rare Tasmanian Winter Edition Gin	40%	26
◇ Four Pillars & The Swillhouse Group "Underground Sydney" Gin	44.8%	22
◇ Four Pillars Barrel Aged Batch 1 Gin	43.8%	28
◇ Four Pillars Barrel Aged Batch 5 Gin	43.8%	28
◇ Four Pillars Barrel Aged Batch 6 Gin	43.8%	28
◇ Four Pillars Bloody Shiraz Gin	37.8%	24
◇ Four Pillars Christmas Gin	43.8%	24
◇ Four Pillars Cousin Vera Gin	42.8%	24
◇ Four Pillars Modern Australian Gin	45%	22
◇ Four Pillars Navy Strength Gin	58.8%	26
◇ Four Pillars Rare Dry Gin	41.8%	22
◇ Four Pillars Spiced Negroni Gin	43.8%	26
◇ Giniversity London Dry Gin	40%	24
◇ Giniversity Botanic Gin	42%	26
◇ Great Southern Dry Gin	40%	24
◇ Great Southern Ginnifer Gin	49%	22
◇ Hippocampus Gin	41.5%	22
◇ Hobart No.4 Batch Distilled Gin	44%	22
◇ Hurdle Creek Still Evolution Aniseed Gin	42%	22
◇ Hurdle Creek Still Yardarm Gin	42%	22
◇ Ink Gin	43%	28
◇ Knocklofty Penn Gin	40%	24
◇ Lark Tasmanian Pepperberry Gin	40%	22
◇ Loch Distillery Small Batch Gin	41%	22
◇ Loch Distillery The Weaver Gin	50%	22
◇ Manly Spirits Australian Dry Gin	40%	22
◇ Manly Spirits Navy Strength Gin	45%	24
◇ Manly Spirits Wild Gin	45%	22
◇ McHenry Barrel Aged Gin	40%	24
◇ McHenry Classic Dry Gin	40%	24
◇ Melbourne Gin Company Dry Gin	42%	22
◇ Moore's Australian Dry Gin	40%	22
◇ Never Never Triple Juniper Gin	43%	24
◇ Never Never Southern Strength Gin	52%	28
◇ Old Young's Six Seasons Gin	50%	24
◇ Old Young's 1829 Gin	45%	22
◇ Old Young's Old B.A.G Gin	42%	26
◇ Oxford Scholar Gin	40%	26
◇ Poltergeist True Spirit Gin	46%	24
◇ Poltergeist Unfiltered Gin	46%	24

◇ Poor Toms Fool's Strength Gin	52%	24
◇ Poor Toms Sydney Dry Gin	41.3%	22
◇ Prohibition Bathtub Cut Gin	69%	28
◇ Prohibition Gin	42%	22
◇ Settler's Rare Dry Gin	42%	22
◇ Stone Pine Distillery Black Truffle Gin	40%	32
◇ Stone Pine Distillery Dry Gin	40%	22
◇ Sud Polaire Expedition Strength Gin	57%	24
◇ Sud Polaire Rare Oak Gin	42%	24
◇ Tamborine Mountain Distillery Lilly Pilly Gin	40%	24
◇ West Winds Barrel Expedition Gin	45%	24
◇ West Winds Broadside Gin	58%	30
◇ West Winds Captain's Cut Gin	63%	30
West Winds Cutlass Gin	50%	24
West Winds Sabre Gin	40%	20
◇ Wild Wombat Gin	42%	22

AUSTRIA (4)



◇ Aeijsst Gin	43.5%	22
◇ J.A. Baczewski Dry Gin	43.5%	22
◇ Prinz Wacholderschnaps Gin	40%	22
◇ Reisetbauer Blue Gin	43%	22

BELGIUM (56)



◇ 1836 Gin	43%	22
◇ Biercee Less is More Gin	44%	24
◇ Biercee Thesis & Antithesis Gin	44%	24
◇ Bishop's Gin	40.7%	22
Blind Tiger Handcrafted Gin Imperial Secrets	47%	22
Blind Tiger Handcrafted Gin Piper Cubeba	47%	22
Black Tomato Gin	42.3%	28
◇ Bonnie Old Tom Gin	47%	22
◇ Buss No. 509 Persian Peach Gin	40%	22
◇ Buss No. 509 Pink Grapefruit Gin	40%	22

◇ Buss No. 509 Raspberry Gin	37.5%	20
◇ Buss No. 509 Rebel Cut Gin	47%	24
◇ Buss No. 509 White Rain Gin	50%	26
◇ Butcher's Gin	43%	22
◇ Clover Gin	40%	22
◇ Clyde London Dry Gin	47%	22
◇ Cockney's Gin	44.2%	22
◇ Copperhead Gin	42%	26

Copperhead Gin

Classified as a London Dry Gin, this Belgian gin has only 5 botanicals: juniper, coriander seed, angelica, cardamom and orange peel. The cardamom and orange peel highlights the botanical delicacy, producing a lovely aroma. Perfectly balanced with an alchemist's skill and housed within copper packaging, this spirit is a reminder of old Europe. Try this gin in a classic G&T or perhaps as a white lady with fresh lemon and orange liqueur.

◇ Crazy Monday Gin	48%	22
◇ Duin Gin	50%	22
◇ Filliers 15 Year Oude Graanjenever	38.6%	24
◇ Filliers 1997 Vintage Grain Genever	43%	26
◇ Filliers 38 % 5 Year Oude Graanjenever	38%	24
◇ Filliers Barrel Aged Dry 28 Gin	43.7%	28
◇ Filliers Classic Dry Gin 28	46%	24
◇ Filliers Pine Blossom Dry Gin 28	42.6%	28
◇ Filliers Dry Gin 28 Tangerine Seasonal Edition	43.7%	28
◇ Forest Dry Autumn Gin	42%	26
◇ Forest Dry Spring Gin	42%	26
◇ Forest Dry Summer Gin	45%	26
◇ Forest Dry Winter Gin	45%	26
◇ Forest Quersus Gin	42%	32
◇ Gilliam's Premium Gin	41%	20
◇ GinGer by Duin Gin	50%	22
◇ Ginlus by Duin Gin	50%	22
◇ Holy Water Cuberdon Gin	40%	22
◇ Holy Water Mustard Gin	40%	22
◇ Lindemans Premium Distilled Gin	46%	30
◇ Lindemans Premium Distilled Gin <i>with a hint of sour cherries</i>	46%	30
◇ Meyer's M1 Gin	38%	22
◇ Meyer's M2 Gin	43%	22
◇ Mont-Saint-Jean	40%	26
◇ Musa Lova Gin	41%	22
◇ Og'ir Gin	40%	22

◇ Ph. Collett's London Dry Gin	46%	18
◇ Rose Petal Gin	42%	26
◇ Spring Gentleman's Cut Gin	48.8%	50
◇ Spring Ladies Edition Gin	38.3%	42
◇ Spring Mediterranee Gin	40.5%	36
◇ Spring Original Gin	43.8%	30
◇ Stokerij Wissels Belegen Jenever	38%	22
◇ 't Dreupelkot Belegen Jenever	38%	22
◇ 't Dreupelkot Korenwijn Jenever	38%	22
◇ Uppercut Dry Gin	49.6%	34
◇ Xolato X-Gin	46%	22

BOLIVIA (1)



◇ Ginebra La Republica Andina Gin	40%	24
-----------------------------------	-----	----

BRAZIL (1)



◇ Arapuru	44%	24
-----------	-----	----

CANADA (35)



◇ Ampersand Distilling Co. Gin	43.8%	26
◇ Auragin Gin	40%	24
◇ Coppers Gin	42.5%	22
◇ Defender Island Gin	40%	26
◇ Dillon's Unfiltered Gin	40%	22
◇ Dixon's VirGin Gin	40%	22
◇ Dixon's Wicked Gin	40%	22
◇ Doctor's Orders Gin	40%	26

◇ Endeavour Old Tom Gin	45%	26
◇ Endeavour Origins Gin	45%	26
◇ Endeavour Pink Gin	47%	26
◇ Endeavour Small Batch Gin	45%	22
◇ Iceberg Gin	40%	22
◇ Kootenay Country Gin	40%	22
◇ Long Table London Dry Gin	44%	24
◇ Noteworthy New Western Dry Gin	43%	24
◇ Okanagan Spirits Family Reserve Gin	40%	24
◇ Okanagan Spirits Gin	40%	24
◇ Old Blood Gin	40%	26
◇ Old Order Legacy Gin	40%	24
◇ Paul's Tomb Gin	40%	24
◇ Queensborough Dry Gin	43%	24
◇ Seraph Gin	40%	24
◇ Sheringham Distillery Vancouver Island Seaside Gin	43%	22
◇ Sin Gin	43%	24
◇ Spirit Bear Gin	40%	24
◇ Stump Coastal Forest Gin	42%	24
◇ Tempo Renovo Dry Gin	40%	24
◇ Terminal City Gin	42%	24
◇ The Empiric Gin	40%	24
◇ Ungava Gin	43.1%	24
◇ Unruly Gin	43%	24
◇ Wallflower Gin	44%	22
◇ Wallflower Oaken Gin	44%	26
◇ Wicked 6 Gin	40%	24

CHANNEL ISLANDS (1)



◇ Blue Bottle Artisan Dry Gin	47%	24
-------------------------------	-----	----

COLOMBIA (2)



Dictador Orthodoxy Gin	43%	22
Dictador Treasure Gin	43%	24

Dictador Treasure Gin

This is an exotic gin hailing from the rum producer, Dictator. Distilled from a sugar cane base, this spirit comes with pronounced qualities of citrus due to the addition of the Mandarino fruit — a unique Colombian fruit lemon. The botanical is further enhanced in the ageing process in oak barrels after being macerated with berries and spices. This makes it ideal to be enjoyed on the rocks or in a stirred classic like the Manhattan.

CZECH REPUBLIC (5)



◇ Buggy's DNA Gin	45%	24
Zufanek Borovicka	45%	20
◇ Zufanek Le Gin Occulte Gin	45%	28
Zufanek Oh My Gin	45%	24
◇ Zufanek OMFG 2016 Gin	45%	24

DENMARK (5)



◇ Copenhagen Dry Gin	44%	28
◇ Copenhagen Orange Prototype Series Gin	41%	26
◇ Isfjord Gin	44%	28
◇ Nordisk Distillers Cut Gin	44.8%	24
◇ Nordisk Gin	44.8%	24

ENGLAND (268)



◇ 1606 Gin	43%	22
◇ 1897 Quinine Gin	45.8%	22
◇ 6 O'Clock Gin	43%	22
7 Dials London Dry Gin	46%	24
◇ Adnam's Copper House Dry Gin	40%	20
◇ Adnam's First Rate Copper Gin	48%	24
◇ Adnam's Rising Sun Gin	42%	22
◇ Ampersand Gin	40%	22
◇ Ancient Mariner London Cut Dry Gin	50%	26
◇ Anno 60 ² Gin	60%	26
◇ Anno Kent Dry Gin	43%	22
Bankes Gin	43%	20
◇ Batch Premium Gin	40%	24
◇ Bayswater Gin	43%	24
Beckett's London Dry Gin	40%	22
Beckett's Sloe Gin	29%	22
Beefeater 24 Gin	45%	20
Beefeater Burrough's Reserve Oak Rested Gin	43%	28
Beefeater Crown Jewel Batch 2 Gin	50%	28
Berkeley Square Gin	46%	22
Bimber London Dry Gin	42%	24
Blackdown Sussex Dry Gin	37.5%	24
Bloom London Dry Gin	40%	22
Bloomsbury Lemon Gin	45%	22
Bombay Original Dry Gin	37.5%	22
Bombay Sapphire Gin	40%	18
Bombay Sapphire East Gin	42%	20
Bombay Star of Bombay London Dry Gin	47.5%	22
Boodle's British Gin	45.2%	20
Boxer Gin	40%	22
Brennen & Brown Colonial Gin	43%	22
Brighton Gin	40%	22
British Polo Gin No.3	42.7%	22
Brockmans Premium Gin	40%	22
Broker's Gin	40%	20
Broker's Gin	47%	22
Bulldog Bold Gin	47%	24
Bulldog Gin	40%	20
Burleighs Distiller's Cut Gin	47%	22

◇ Burleighs Export Strength Gin	47%	22
◇ Burleighs London Dry Gin	40%	20
◇ Burleighs Leicester Dry Gin	40%	24
◇ Burleighs PINK Edition Gin	40%	24
◇ Cambridge Dry Gin	42%	26
◇ Cambridge Truffle Gin	42%	32
◇ Capreolus Garden Tiger Dry Gin	47%	24
◇ Chase Williams Elegant Gin	48%	22
Chase Williams Elegant Seville Orange Gin	40%	26
◇ Chase Williams Extra Dry Gin	40%	22
◇ Chase Williams Single Botanical Gin	40%	26
◇ Chase Williams Sloe Mulberry Gin	29%	26
◇ Chilgrove Dry Gin	44%	24
◇ City of London Christopher Wren Gin No.2	45.3%	28
◇ City of London Dry Gin	41.3%	22
◇ City of London Old Tom Gin	43.3%	26
City of London Sloe Gin	28%	26
◇ City of London Square Mile Gin	47.3%	22
Conker Spirits Dorset Dry Gin	40%	22
Cotswolds Gin	46%	20
◇ Cremorne Colonel Fox's London Distilled Dry Gin	40%	22
Cremorne Gentleman Badger's Wild Blackthorne Sloe Gin	26%	22
Curio Rock Samphire Gin	41%	24
◇ D1 London Gin	41%	22
Darnley's View Gin	40%	22
Darnley's View Spiced Gin	42.7%	22
Death's Door & East London Liquor Company Collaboration Gin	47%	26
Dodd's Gin	49.9%	24
Dodd's Kew Gin	46%	26
Dodd's Old Tom Limited Edition Gin	49.9%	26
Dr. J's Gin	45%	22
Durham Gin	40%	22
East London Liquor Company Barrel-aged Ex-Bourbon Cask Gin	41%	26
East London Liquor Company Barrel-aged New & Old Oak Gin	52%	26
East London Liquor Company Dry Gin	40%	22
East London Liquor Company Premium Batch No.1 Gin	45%	26
East London Liquor Company Premium Batch No.2 Gin	47%	26
◇ Edgerton Blue Spice Gin	43%	22
◇ Edgerton Original Pink Gin	43%	22
◇ Faith & Sons Gin	42.2%	24
◇ Fifty Eight Gin	43%	30
◇ Fifty Pounds Gin	43.5%	24
◇ Finsbury Platinum Gin	47%	22
◇ Fishers Gin	44%	30

Ford's Gin

A gin made in London at Thames Distillers, by 8th generation gin distiller, Charles Maxwell. It is a bold, modern interpretation of a London Dry Gin with lots of juniper, but also lots of additional citrus, floral and spice notes. A touch of Jasmine goes a long way. It goes exceptionally well in our ATLAS Martini with Mancino Ambrato Vermouth, orange bitters and champagne vinegar.

◇ Forest (Bond) Gin	42%	22
◇ Foxdenton Estate London Dry Gin	48%	26
◇ Foxdenton Estate Sloe Gin	27%	22
◇ Frog's Lip Gin	47%	22
◇ Gilpin's Westmorland Extra Dry Gin	47%	22
◇ Gin Lane 1751 London Dry Gin	40%	22
◇ Gin Lane 1751 Old Tom Gin	40%	22
◇ Gin Lane 1751 Royal Strength Gin	47%	22
◇ Gin Lane 1751 Victoria Pink Gin	40%	22
◇ GOA Gin	47%	22
Gordon's London Dry Gin	37.5%	16
Gordon's Sloe Gin	26%	20
Gordon's Crisp Cucumber Gin	37.5%	20
◇ Greenall's London Dry Gin	40%	22
Gunroom Aged In Whiskey Casks Gin	43%	24
◇ Gunroom Navy Gin	57%	28
Half Hitch Gin	40%	28
◇ Hammer & Son Geranium Gin	44%	22
◇ Hammer & Son Old English Batch No.2 Gin	44%	24
◇ Haswell London Dry Gin	47%	24
Hayman's 1820 Gin Liqueur	40%	22
◇ Hayman's English Cordial Gin	42%	24
Hayman's Family Reserve Gin	41.8%	22
Hayman's London Dry Gin	40%	20
Hayman's Old Tom Gin	40%	20
◇ Hayman's Royal Dock Gin	57%	22
◇ Hayman's Sloe Gin	26%	20
◇ Hayman's 1850 Reserve Gin	40%	20
◇ Hepple Gin	45%	26
◇ Hexham Premier Cru Gin	40%	24
◇ Hoxton Gin	43%	24
◇ Indian Summer Saffron Infused Gin	46%	24

◇ Ish Gin	41%	24
◇ Ish Limao Gin	40%	24
◇ Japanese Gin	42%	30
◇ Jawbox Gin	43%	22
◇ Jensen Bermondsey Gin	43%	22
Jensen Old Tom Gin	43%	22
◇ Jinzu Gin	41.3%	24
◇ JJ Whitley London Dry Gin	38.6%	20
◇ Jodhpur Gin	43%	22
◇ Jodhpur Reserve London Dry Gin	43%	28
◇ Judges London Dry Gin	40%	18
◇ Juniper Green Organic Gin	37.5%	22
◇ Juniper Green Trophy Gin	43%	22
◇ King of Soho Gin	42%	22
◇ Knockeen Hills Heather Gin	47.3%	24
◇ Langley's Distilled London Dry Gin	41.7%	22
◇ Langtons No 1 Gin	40%	22
◇ Leeds Gin	40%	24
◇ Little Bird London Dry Gin	41.6%	22
Liverpool Complex Organic Gin	42%	24
◇ Liverpool Small Batch Gin	43%	24
◇ Liverpool Small Batch Gin Valencian Orange Gin	43%	24
◇ Lord Astor London Dry Gin	40%	18
◇ Lyme Bay Winery Reserve Liqueur Sloe Gin	26%	22
◇ Maiden Maidstone Gin	42%	24
◇ Manchester Gin	42%	22
◇ Manchester Three Rivers Gin	40%	22
◇ Marks & Spencer London Distilled Dry Gin	41.6%	22
◇ Martin Miller's 9 Moons Gin	40%	30
Martin Miller's Gin	40%	22
Martin Miller's Westbourne Strength Gin	45.2%	24
◇ Masons Dry Yorkshire Gin	42%	22
◇ Masons Dry Yorkshire Lavender Edition Gin	42%	22
◇ Masons Dry Yorkshire Tea Edition Gin	42%	22
◇ Master's Gin	40%	22
◇ Mayfair Dry Gin	40%	22
◇ MEWS Gin	38%	22
Mombasa Club Colonel Reserve Gin	43.5%	26
Mombasa Club Gin	41.5%	20
◇ Mombasa Club Strawberry Edition Gin	37.5%	24
◇ Nelson's Gin	42.5%	26
No. 3 London Dry Gin	42%	24
◇ Opihr Oriental Spiced Gin	42.5%	20
◇ ORIGIN Arezzo - Italy Gin	46%	22
◇ ORIGIN Caprese Michelangelo - Italy Gin	46%	22

◇ ORIGIN Istog - Kosovo Gin	46%	22
◇ ORIGIN Klanac - Croatia Gin	46%	22
◇ ORIGIN Meppel - Netherlands Gin	46%	22
◇ ORIGIN Skopje - Macedonia Gin	46%	22
◇ ORIGIN Valbone - Albania Gin	46%	22
◇ Oxley Gin	47%	26
◇ Palmer's 44 London Dry Gin	44%	22
◇ Pink 47 Gin	47%	22
◇ Pinkster Gin	37.5%	22
◇ Plymouth Gin	41.2%	20
◇ Plymouth Navy Strength Gin	57%	24
◇ Plymouth Old Presentation Bottle Gin	41.2%	26
◇ Plymouth Sloe Gin	26%	20
◇ Poetic License Northern Dry Gin	43.2%	22
◇ Poetic License Old Tom Gin	41.6%	22
◇ Portobello Road 171 Jason William's Pepper Spray Gin	42%	22
◇ Portobello Road No.171 London Dry Gin	42%	22
Pothecary Gin	44.8%	24
Professor Cornelius Ampleforth Bathtub Gin	43.3%	24
◇ Professor Cornelius Ampleforth Old Tom Gin	42.4%	24
◇ Professor Cornelius Ampleforth Rum Aged Bathtub Gin	43.1%	26
◇ Professor Cornelius Ampleforth Sloe Gin	33.8%	22
◇ Professor Cornelius Ampleforth Sloe 2014 Gin	33.8%	26
◇ Professor Cornelius Ampleforth Very Old Tom Gin	47.5%	24
◇ Rathbone New London Dry Gin	40%	22
◇ Revolution Gin	42%	22
◇ Sacred Cardamom Gin	43.8%	24
◇ Sacred Christmas Puding Gin	40%	24
◇ Sacred Coriander Gin	43.8%	24
◇ Sacred Gin	40%	22
◇ Sacred Juniper Gin	43.8%	24
◇ Sacred Licorice Gin	43.8%	24
◇ Salcombe First Bottling Limited Edition Gin	44%	26
◇ Salcombe Start Point Gin	44%	24
◇ Sibling Triple Distilled Gin	42%	26
Silent Pool Gin	43%	26

Silent Pool Gin

A modern yet somewhat whimsical gin from Surrey Hills, England. With honey'd sweetness and soft floral notes, the cheery aroma and taste is brought about by 24 botanicals including local chamomile, elderflower and pear. This makes an alluring

Bee's Knees cocktail with fresh lemon and lavender honey. 46% 20

◇ Silverback Mountain Strength Gin	40.7%	24
◇ Sipsmith House of Commons Gin	41.6%	24
◇ Sipsmith London Dry 2012 Collectors Edition Gin	41.6%	20
Sipsmith London Dry Gin	41.6%	24
◇ Sipsmith Queen Elizabeth Limited Edition Gin	43%	28
◇ Sipsmith Raffles 1915 Gin	29%	20
Sipsmith Sloe Gin	52%	24
◇ Sipsmith VJOP #2 Japan Edition Gin	57.7%	22
Sipsmith VJOP Gin	40.5%	24
◇ Sir Robin of Locksley Gin	42%	26
◇ Slingsby Gin	40.1%	22
◇ Smuggler's Strength Gin	40%	24
◇ Spitfire Heritage Gin	42%	22
◇ Stafford's Gin	42%	22
◇ Stovell's Handcrafted Gin	47%	22
◇ SW4 London Dry Gin	40%	22
◇ Swordsman London Dry Gin	42%	24
◇ T.E.A Earl Grey Gin	42%	24
◇ T.E.A Jasmine Gin	47.3%	26
◇ Tanqueray Bloomsbury Gin	43.1%	16
Tanqueray Gin	40%	26
◇ Tanqueray Malacca Gin	47.3%	26
◇ Tanqueray Old Tom Gin	41.3%	26
Tanqueray Rangpur Gin	47.3%	24
Tanqueray No. Ten Gin	42%	22
◇ Tarquin's Handcrafted Cornish Gin	57%	28
◇ Tarquin's Navy Strength Limited Edition Gin	42%	22
◇ Tarquin's The Tonquin Dry Gin	40%	22
◇ The Corinthian London Dry Gin	42%	22
◇ The Distillery Celebrated Butter Gin	42%	22
◇ The Distillery King Theodore of Corsica Gin	42%	22
◇ The Distillery Navy Strength Gin	42%	22
◇ The Distillery Old Tom Gin	42%	22
◇ The Distillery Super Dry Gin	47.71%	24
◇ The Lakes Explorer Edition Gin	43.7%	22
◇ The Lakes Gin	47%	22
The London No.1 Original Blue Gin	40%	22
◇ The Original Barber's Gin	42.4%	22
◇ The Spectator Gin	40%	22
◇ The Sting London Dry Gin	46%	24
The Sweet Potato Spirit Co. London Dry Gin	45%	22
The Tottering Sharpener Gin	43.9%	22
The Wrecking Coast Cornish Clotted Cream Gin	42%	22
◇ Thomas Dakin Gin	40%	22
Tiger Premium Gin	42%	26

◇ Toujours 21 Gin	43%	22
◇ Trevethan Cornish Gin	42%	24
◇ True North Sheffield Dry Gin	40%	22
◇ Twisted Nose Winchester Dry Gin	40%	22
◇ Two Birds London Dry Gin	40%	22
◇ Two Birds Old Tom Gin	40%	26
◇ Two Birds Sipping Gin	40%	22
◇ Two Birds Speciality Cocktail Gin	43%	24
◇ Victory Cold Gin	43%	24
◇ VII Hills Gin	44%	22
◇ Warner Edwards Harrington Dry Gin	30%	22
◇ Warner Edwards Harrington Sloe Gin	43%	22
◇ Warner Edwards Harrington Botanical Garden Melissa Gin	40%	22
Wembley London Dry Gin	42%	20
Whitley Neill Gin	43%	24
Whitley Neill Quince Gin	42%	22
◇ Whittaker's Gin	42%	22
◇ Wicked Wolf Exmoor Gin	43%	24
◇ Willem Barentsz Premium Gin	43%	22
◇ Wolf's Nose Gin	43.8%	22
◇ Worship Street Whistling Shop Cream Gin	40%	22
◇ Zephyr Blu Gin	42.5%	24
◇ Zymurgorium Mandarin Dynasty Gin	40%	22
◇ Zymurgorium The Original Manchester Gin		

ESTONIA (1)



Crafter's London Dry Gin	43%	22
--------------------------	-----	----

FINLAND (5)



◇ Bothnia Bay Dry Gin	38%	24
◇ Kalevala Distilled Gin	46.3%	22
Koskue Barrel-aged Gin	42.6%	26
Napue Gin	46.3%	24

FRANCE (21)



◇ Audemus Pink Pepper Gin	44%	26
◇ BR Essential London Dry Gin	40%	24
Citadelle No Mistake Old Tom Gin	46%	24

Citadelle No Mistake Old Tom Gin

A limited release gin from French cognac and rum producers, Maison Ferrand. This is a rich, juicy gin that is a perfect mix of herbal juniper notes and baking spice flavours. As the style suggests, it is aged and sweetened with Caribbean brown sugar. Try this gin on the rocks, or in a strong stirred cocktail such as a Hanky Panky with sweet vermouth and Fernet Branca.

Citadelle Original Gin	44%	18
Citadelle Reserve Gin	44%	22
◇ Citrum Small Batch Gin	40%	22
◇ Diplome Gin	44%	22
◇ Esme Gin	40%	22
Fair Barrel Aged Gin	42%	24
Fair Juniper Gin	42%	22
G'Vine Floraison Gin	40%	20
G'Vine Nouaison Gin	40%	20
◇ Gabriel Boudier Rare Dry Gin	37.5%	22
Gabriel Boudier Saffron Gin	40%	22
◇ GIN Gold 999.9 Gin	40%	24
◇ G.W. Goodwyn Co. Classic Gin	40%	22
Le Gin 1&9 Gin	43%	20
Le Gin Christian Drouin Gin	42%	22
◇ Magellan Gin	44%	28
◇ Six Ravens London Dry Gin	46%	26
◇ Thompson's Small Batch Gin	43%	22

GERMANY (52)

◇ 5 Continents Hamburg Dry Gin	47%	22
◇ Adler Berlin Dry Gin	42%	26
◇ Amato Wiesbaden Gin	43.7%	22
◇ Bavarka Bavarian Gin	46%	24
◇ Berliner Brandstifter Berlin Dry Gin	43.3%	24
Bitter Truth Pink Gin	40%	26
◇ Black Christmas Edition 2012 Gin	45%	26
◇ Black Distillers Cut 2013 Gin	60%	26
◇ Both's Old Tom Gin	47%	24
◇ Clocker's Gin	44%	22
◇ Clocker's 3-a-gin St. Pauli Gin	44%	24
◇ Diamond London Dry Gin	45%	22
◇ Diamond Red Port Cask Finish Gin	45%	24
◇ Elephant Gin	45%	24
◇ Elephant Sloe Gin	35%	22
◇ Feller Gin	40%	24
◇ Feel! Munich Dry Gin	47%	26
◇ Ferdinand's Saar Dry Gin	44%	30
◇ Ferdinand's Saar Quince Gin	30%	32
◇ Goldberner Dry Gin	45%	22
◇ Granit Bavarian Gin	42%	24
◇ Grassl Bergbrenner Gin	43%	26
◇ Lebensstern London Dry Gin	43%	24
◇ Lebensstern Pink Gin	43%	24
◇ Luum London Dry Gin	40%	22
◇ Madame Geneva Blanc Gin	44.4%	22
◇ Madame Geneva Rouge Gin	41.9%	22
Marx Organic Gin	40%	20
◇ Monkey 47 Beef Pepper Gin	47%	32
◇ Monkey 47 Distiller's Cut Edition of 2016 Gin	47%	32
◇ Monkey 47 Gin	47%	24
Monkey 47 Sloe Gin	29%	24

Monkey 47 Sloe Gin

Originating from The Black Forest, this popular German gin is re-interpreted in a classic English style with its sloe berry flavours and 47 botanicals. Although it is still very confectionary, this is a lot spicier and drier than normal sloe gins with aromas of pepper, dried woody herbs and sweet red berries. This versatile gin liqueur can be drunk on its own or perhaps in a Negroni variation.

Mundart Kaisertuhl Dry Gin	43%	34
Niemand Dry Gin	30%	32
◇ Raritas Juniper Gin	46%	22
◇ Rubus Gin	42%	22
◇ Sears Cutting Edge Gin	44%	22
◇ Siegfried Rheinland Dry Gin	41%	22
◇ Skin Christmas 2016 Edition Gin	42%	24
Skin Gin	42%	30
◇ Spitzmund Gin	47%	22
◇ Stauffenberg Barrel Aged Gin	47%	22
◇ Steinhauser See Gin	48%	24
◇ Sul Gin	43%	24
◇ The Duke Munich Dry Gin	45%	26
◇ The Secret Treasures Ocean and Vulcano Gin	45.5%	24
◇ Triple Peak London Dry Gin	44%	26
◇ Windspiel Gin	47%	22
◇ Windspiel Reserve Premium Dry Gin	49.3	26
◇ Winter Spice Gin	47%	22
◇ Ziegler G=in3 Distilled Dry Gin	45%	22

GREECE (1)



◇ The Clumsies Old Tom Gin	40%	22
----------------------------	-----	----

ICELAND (6)



◇ 64° Reykjavik Distillery Eniberja Organic Gin	43%	26
◇ Reykjavik Distillery Cucumber Gin	38%	26
◇ Isafold Icelandic Gin	37.5%	22
◇ VOR Icelandic Barrel-aged Gin	47%	24
◇ VOR Icelandic Gin	47%	24
◇ VOR Navy Strength Gin	57%	26

INDIA (1)



◇ Big Ben London Dry Gin	42.8%	22
--------------------------	-------	----

IRELAND (13)



◇ Blackwater No. 5 Irish Gin	41.5%	18
◇ Bertha's Revenge Gin	42%	22
◇ Conncullin Irish Gin	47%	20
◇ Dingle Original Gin	42.5%	24
◇ Drumshanbo Irish Gunpowder Gin	43%	26
◇ Glendalough Wild Autumn Botanical Gin	41%	22
◇ Glendalough Wild Spring Botanical Gin	41%	22
◇ Ha'Penny Gin	41%	22
◇ Mor Irish Gin	40%	22
◇ Shortcross Gin	46%	22
◇ Shortcross Small Batch Cask Aged Gin	44%	22
◇ The Exiles Irish Gin	41.3%	22
◇ Von Hallers Gin	44%	26

ITALY (13)



◇ Bordiga Rosa Gin	42%	22
◇ Bordiga Smoke Gin	42%	22
Del Professore Madame Gin	42.9%	22
Del Professore Monsiueur Gin	43.7%	22
◇ Ginpilz Dry Gin	40%	22
◇ Major Gin	47%	22
◇ Malfy Gin	41%	22
◇ Marton's Gin	47%	24
◇ Occitan London Dry Gin	42%	22
Poli Marconi 46 Gin	46%	26

Poli Marconi 46 Gin

Mostly grappa producers, the Poli family distillery in Veneto also make this wonderful gin that represents the Asiago high plateau where the botanicals are sourced from. Italian juniper, 2 kinds of Alpine pine, mint and cardamom are added to the muscat grape spirit base. This fresh, pine-y, yet silky gin is great in a shaken gin classic sour such as a Corpse Reviver #2 with fresh lemon, orange liqueur, aromatised wine and a lick of absinthe.

◇ Rivo Gin	43%	22
Sabatini Gin	41.3%	26
◇ Vallombrosa Gin	47%	22

JAPAN (3)



Ki No Bi Kyoto Dry Gin	45.7%	26
Ki No Bi Navy Strength	54.5%	32
Ki No Tea	45.7%	28

LIECHTENSTEIN (1)



Liechtenstein Dry Gin	47%	22
-----------------------	-----	----

LUXEMBOURG (2)



◇ Ginix Hand Distilled Gin	41%	22
◇ Mansfeld Gin	47.5%	22

MEXICO (2)



◇ Mezcal MG Gin	45%	28
◇ Pierde Almas +9 Botanicals Gin	45%	28

MOLDOVA (1)



◇ Tower Bridge (White) Gin	40%	22
----------------------------	-----	----

NETHERLANDS (68)



◇ Before Gin Genever	38%	22
◇ Blankenheym & Nolet Oude Jenever	38%	22
Black Tomato Gin	42.3%	26
◇ Bobby's Schiedam Dry Gin	42%	24
◇ Bobby's Schiedam Jenever	38%	24
◇ Bokma 5 Year De Vijf Jaren Genever	38%	22
◇ Bokma Oude Friesche Genever	38%	22
◇ Bols 6 Year Corenwyn Genever	40%	22
◇ Bols Corenwyn Genever	38%	22
Bols Genever	42%	22

◇ Bols Jonge Graanjenever Gin	35%	22
Bols Zeer Oude Genever	35%	22
◇ Boomsma Jonge Pure Graanjenever	35%	20
◇ Brouwerij de Molen Gentle Gin	38%	22
◇ By The Dutch Old Genever	38%	22
◇ Damrak Amsterdam Original Gin	41.8%	22
◇ De Borgen Dutch Cornwyn Genever	38%	22
◇ De Borgen Holland Gin	40.8%	22
◇ Echte Oude Friesche Genever	38%	22
◇ Floryn Jonge Jenever	35%	22
Gin & Jonnie Gin	45%	22
◇ Goblet Jonge Graan Jenever	35%	22
◇ Goodmans Gin	44%	22
◇ Hanami Gin	41.3%	24
◇ Hooghoudt Jonge Dubbele Graan Jenever	35%	22
◇ Hoppe Jonge Jenever	35%	22
◇ Ketel 1 Jonge Jenever	35%	22
◇ Legner 100% Jenever	30%	22
◇ Loopuyt Dry Gin	45.1%	24
◇ Nolet's Silver Dry Gin	47.6%	30
◇ Notarios XO Genever	35%	22
◇ Olifant Jonge Graanjenever	35%	22
◇ Onder de Boompjes 100% Maltwine Genever	40%	22
◇ Onder de Boompjes Genever	35%	20
◇ Onder de Boompjes Old Dutch Genever	38%	20
◇ Oud Amsterdam Dubbel Gebeide Jenever	41%	22
◇ Oud Amsterdam Jonge Graan Jenever	35%	22
◇ Rutte & Zn Jonge Graan Jenever	35%	22
◇ Rutte & Zn Oude 5 Graan Jenever	38%	22
Rutte Celery Gin	43%	18

Rutte Celery Gin

Rutte Distillers have been making botanical spirits in Dordrecht, Holland since 1872 and continue to be a well respected traditional genever producer. Recently, they released this delicious, quirky dry gin variation. Besides the more classic botanicals such as juniper, coriander seed and cardamom, they also use a fair amount of celery leaf, and orange peel. This produce a full flavoured, floral gin that's fantastic in a Southside cocktail with fresh lime, sugar and aromatic mint.

Rutte Old Simon Genever	35%	18
◇ Skully Dry Gin	41.8%	24
◇ Sloane's Dry Gin	40%	22
Sylvius Gin	45%	22
◇ Three Corner Dry Gin	42%	24
◇ V2C Dutch Dry Gin	41.5%	22
◇ Van Wees 15 Year Zeer Oude Genever	42%	26
◇ Van Wees Amsterdamsche Oude Genever	35%	24
◇ Van Wees Bessen Jenever	20%	22
◇ Van Wees Korewijn Rembrandt Genever	40%	22
◇ Van Wees Loyaal 5 Year Zeer Oude Genever	40%	26
◇ Van Wees Roggenaer 15 Year Genever	40%	26
◇ Van Wees Roggenaer 3 Year Genever	40%	26
◇ Van Wees Roggenaer Genever	40%	26
◇ Van Wees Jonge Amsterdamsche Graangenever	35%	22
◇ Van Wees Dubbel Gebeide Zeer Oude Genever	40%	24
◇ Verhoeven Jonge Graan Genever	35%	22
◇ VL 92 Gin	41.7%	22
◇ Voortrekker The Pioneer's Gin	40%	24
◇ Vording's Gin	44.7%	24
◇ Wagging Finger Exercise V1.0 Gin	44%	22
◇ Wagging Finger Exercise V2.0 Gin	44%	22
◇ Zuidam 3 Year Zeer Oude Genever	38%	22
◇ Zuidam 5 Year Zeer Oude Genever	38%	22
◇ Zuidam Dutch Courage Dry Gin	44.5%	22
◇ Zuidam Korenwijn 1 Year Genever	38%	22
◇ Zuidam 1 Year Rogge Genever	35%	22
◇ Zuidam Young Grain Genever	35%	22

NEW ZEALAND (11)

◇ Black Robin Rare Gin	43%	26
◇ Blenheim Bay Gin	42.5%	24
◇ Broken Heart Gin	40%	26
◇ Broken Heart Navy Strength Gin	57%	28
◇ Lighthouse Gin	42%	24
◇ Rogue Society Dry Gin	40%	24
◇ Rogue Society Goldi Locks Gin	57%	26
◇ South Gin	40.2%	24
◇ The Source Pure Cardrona Barrel Aged Gin	47%	24
◇ The Source Pure Cardrona Gin	47%	22
◇ Victory Gin	42%	26

NORWAY (3)



◇ HIMKOK Gin	41%	22
Kimerud Gin	47%	22
◇ Vidda Torr Gin	43%	26

PERU (2)



Amazonian Gin Company Gin	41%	24
GIN'CA Gin	40%	24

GIN'CA Gin

An exotic gin coming from the Inca Distillery in Peru, a country that is renowned for only making pisco. This is made from a sugar cane molasses base, and utilises native Peruvian botanicals such as Hucatay, lime, Minneola, Peruvian pepper. Not for the purists, these local botanicals give the gin a unique peppery zing. Try this in a Lasy Word cocktail; shaken with Luxardo Maraschino Liqueur, fresh lime and Green Chartreuse.

PORTUGAL (12)



◇ 6M Friday Gin	40%	22
◇ ADAMVS Dry Gin	44.4%	26
◇ Azor Gin	40%	22
◇ Edmundo Single Estate Aivarinho Infused London Dry Gin	40%	24
◇ First Distilled Gin	40%	22
◇ Friends Touriga Nacional Edition Gin	43%	22
◇ Nao Premium Gin	40%	22
◇ Sharish Blue Magic Gin	40%	22
◇ Sharish Gin	40%	22
◇ Tinto Red Premium Gin	40%	24
◇ Wild Snow Dog Gin	40%	22
◇ Will's Premium Gin	40%	26

RUSSIA (1)

◇ Polugar No. 10 Old Russian Gin	38.5%	28
----------------------------------	-------	----

SCOTLAND (57)

◇ Alambic Special Scottish 19 Year Gin	50%	38
◇ Alambic Special Orkney 7 Years Gin	51.7%	32
◇ Arbikie Kirsty's Gin	43%	22
◇ Blackwoods 2012 Vintage 40% Gin	40%	24
◇ Blackwoods Superior 2012 Limited Edition 60% Gin	60%	26
◇ Cadenhead's Classic Gin	50%	22
Caorunn Scottish Gin	41.8%	22
◇ Crossbill Small Batch Highland Dry Gin	43.8%	24
◇ Crossbill Special Edition 200 Year Old Single Specimen Juniper Dry Gin	59.8%	32
◇ Daffy's Small Batch Premium Gin	43.4%	24
◇ Daffy's Manor Racing Limited Edition Gin	43.2%	28
◇ Eden Mill Hop Gin	46%	24
◇ Eden Mill Love Gin	42%	26
◇ Eden Mill Original Gin	42%	24
◇ Edinburgh Cannonball Navy Strength Gin	57.2%	28
◇ Edinburgh Christmas Gin	43%	24
Edinburgh Gin	43%	24
Edinburgh Raspberry Gin Liqueur	20%	24
◇ Edinburgh Seaside Gin	43%	24
◇ Firkin Islay Cask Gin	46%	24
◇ Gilt Gin	40%	22
◇ GlenWyvis Limited Edition Gin	40%	22
◇ Gordon Castle Gin	43%	22
Hendrick's Gin	41.4%	22
◇ Kirkjuvagr Orkney Gin	43%	26
◇ Makar Glasgow Gin	43%	22
◇ Makar Old Tom Gin	43%	22
◇ McQueen Signature Dry Gin	42%	24
◇ McQueen Sweet Citrus Gin	42%	24
Minus 33 Juniper Spirit	33%	22
NB Gin	42%	24
Old Raj Blue Gin	55%	26
Old Raj Red Gin	46%	22
◇ Persie Herby & Aromatic Gin	40%	22

◇ Pickering's Original 1947 Gin	42%	22
◇ Pickering's Gin	42%	22
◇ Pickering's Oak Aged Highland Gin	47%	26
◇ Pickering's Oak Aged Island Gin	47%	26
◇ Pickering's Oak Aged Speyside Gin	47%	26
◇ Pickering's Sloe Gin	30%	24
Porter's Gin	41.5%	22
◇ Rock Rose Scottish Botanical Gin	41.5%	24
◇ Rock Rose Scottish Navy Strength Gin	57%	28
◇ Rock Rose Scottish Summer Edition Gin	41.5%	24
◇ Shetland Reel Holly Days Gin	43%	22
◇ Shetland Reel Simmer Gin	49%	22
◇ Strathearn Citrus Gin	40%	22
◇ Strathearn Classic Gin	40%	22
◇ Strathearn Heather Rose Gin	40%	22
◇ The Botanist Gin	46%	24

The Botanist Gin

A cracking gin from respected single malt producer Bruichladdich, from the island of Islay, a famous whisky region. Like the name suggests, the gin is all about the botanicals. They use 31, with a whopping 22 sourced from the small island - with some highlights being some locally grown juniper, and an array of Harry Potter-sounding ingredients such as meadowsweet, mugwort and cicely leaves. The result is a sweet, slightly menthol aroma and flavour profile. This is great in a G&T with fresh mint and lemon.

◇ The Braemle Gin Liqueur	24%	22
---------------------------	-----	----

SLOVAKIA (1)



◇ Goral Borovicka Traditional	40%	22
-------------------------------	-----	----

SOUTH AFRICA (38)

◇ A Mari Gin	43%	26
◇ Bloedlemoen Handcrafted Gin	43%	28
◇ Buitenverwachting Constantia Gin	37%	22
◇ Cape Town Rooibos Red Gin	43%	22
◇ Clemengold Citrus Gin	43%	26
◇ Genever Montane Gin	43%	24
◇ Ginifer Barrel Aged Chili Infusion Gin	43%	24
◇ Ginifer Handcrafted Gin	43%	24
◇ Ginologist Floral Gin	43%	24
◇ Ginologist Spice Gin	43%	24
◇ Hope On Hopkins London Dry Gin	43%	24
◇ Hope on Hopkins Mediterranean Gin	43%	24
◇ Hope on Hopkins Salt River Gin	43%	24
◇ Inverroche Amber Gin	43%	24
◇ Inverroche Classic Gin	43%	24
◇ Inverroche Verdant Gin	43%	24
◇ Jorgensen's Distillery Hibiscus Gin	43%	26
◇ Jorgensen's Distillery Original Gin	43%	26
◇ Musgrave Crafted Gin	43%	26
◇ Musgrave Pink Gin	43%	26
◇ New Harbour Distilled Rooibos Infused Gin	43%	24
◇ New Harbour Distillery Spekboom Gin	43%	24
◇ Pienaar & Son Empire Gin	43%	26
◇ Pienaar & Son Orient Gin	43%	26
◇ Six Dogs Karoo Gin	43%	24
◇ Stretton's Double Cut Gin	43%	22
◇ Stretton's London Dry Gin	43%	22
◇ Time Anchor Distillery London Dry Gin	43%	22
◇ Triple Three Juniper Gin	43%	24
◇ Westcliff Gin	43%	24
◇ Wilderer Distillery Fynbos Gin	45%	22
◇ Woodstock Gin Co Casked Aged Gin	43%	22
◇ Woodstock Gin Co High Tea Gin	43%	24
◇ Woodstock Gin Co Inception Beer Base Gin	43%	24

SPAIN (73)



◇ 19 Flors Gin	40%	22
◇ 5th Air Black Gin	40%	22
◇ 5th Earth Citrus Gin	42%	22
◇ 5th Fire Red Fruits Gin	42%	22
◇ 5th Water Floral Gin	42%	22
◇ 7D Gin	40%	22
◇ Akori Gin	42%	24
Alkkemist Gin	40%	24
◇ BCN Gin	40%	26
◇ Berrypickers Gin	38%	22
◇ Botanic Kiss Gin	37.5%	22
◇ Botanic Premium London Dry Gin	40%	24
◇ Botanic Ultra Premium London Dry Gin	45%	24
◇ Bruni Collins Gin	39%	22
◇ Castle Gin	42.3%	24
◇ Fever Island Premium Gin	40%	22
◇ G10 Gin	40%	22
◇ Germa Dry - Gin	40%	22
◇ Get Back Blue Gin	40%	22
◇ Get Back Pink Gin	40%	22
◇ Gin Eva	45%	22
◇ Gin Loe	40%	14
Gin Mare	42.7%	22
◇ Gin SEA	40%	26
◇ Ginbraltar Spanish Citrus Gin	40%	22
◇ Ginbraltar Spanish Dry Eucalyptus Gin	40%	22
◇ Ginebra K-25 Gin	45%	28
Ginraw Gin	42.3%	22
◇ Ginself Gin	40%	24
◇ Harbour Distilled Gin	40%	24
◇ Kinross Citric & Dry Gin	40%	22
◇ Kinross Tropical & Exotic Fruits Gin	40%	22
◇ Kinross Wild Berry Fruits Gin	40%	22
Larios Ginebra Mediterranea Gin	37.5%	22
◇ Larios Rose Gin	37.5%	22
◇ Law Premium Gin	44%	32
◇ LEVEL Gin	44%	22
◇ LEVEL Reserve Gin	44%	22
◇ M5 Gin	48%	26
◇ Macaronesian White Gin	40%	24

Mascaro 9 Gin	40%	22
◇ Modernessia Gin	40%	22
Mom Gin	41.3%	22
◇ No. Ø London Dry Gin	40.8%	22
◇ Nordés Atlantic Galician Gin	40%	22
◇ Nura Menorca Dry Gin	40%	24
◇ NUT London Dry Gin	45%	22
◇ Only Gin	43%	26
◇ Platinum TV Gin	43%	22
◇ Platu Gin	39%	22
◇ Port of Dragons 100% Floral Gin	40%	22
◇ Port of Dragons 100% Pure Gin	40%	22
◇ Puerto de Indias Pure Black Edition Gin	40%	22
◇ Puerto de Indias Strawberry Gin	37.5%	22
◇ Rives 1880 Gin	38.3%	22
◇ Ruchey Nispero London Dry Gin	40%	22
◇ Santamania Four Pillars Gin	40%	26
Santamania Lola y Vera Gin	40%	24
Santamania Madrid London Dry Gin	41%	26

Santamania Madrid London Dry Gin

This new, modern take on a London Dry Gin comes to us from Madrid, Spain. Launched in 2014, the name roughly translates to 'obsession' or 'attention to detail', alluding to the 3 years spent to perfect the recipe. It's a bright, vibrant gin with raspberries and herbs added to the botanical mix. We love it in a classic Clover Club cocktail with fresh lemon, raspberry syrup and egg white.

Santamania Reserva Gin	41%	26
◇ Siderit Gingerlime Gin	43%	22
Siderit Hibiscus Gin	43%	22
◇ Siderit London Dry Gin	43%	22
◇ Sikkim Bilberry Gin	40%	22
◇ Sikkim Privee Premium Gin	40%	24
◇ Simple Gin	40%	22
◇ Suau Gin	43%	22
◇ Tann's Gin	40%	22
◇ The Botanical's Premium London Dry Gin	42.5%	22
◇ Valxerit Gin	40%	22
◇ Vones London Dry Gin	40%	24
◇ Wint & Lila Gin	40%	22
Xoriguer Gin	38%	22

SRI LANKA (1)



Colombo No. 7 Gin

43.1% 20

Colombo No. 7 Gin

A distinctly Sri Lankan take on London Dry Gin, the recipe dates back 70 years to the Rockland Distillery in Colombo. Added to the dry gin base are aromatic dried herbs and spice, with curry leaf and cinnamon being the most pronounced. This goes really well in a tall high ball with East Imperial Thai Ginger Ale.

SWEDEN (15)



◇ Goteborg Gin	45%	22
◇ Herno Gin	40.5%	24
◇ Herno Juniper Cask Gin	47%	30
◇ Herno Navy Strength Gin	57%	30
◇ Herno Old Tom Gin	43%	30
◇ Herno Sloe Gin	30%	28
◇ ImaGin Gin	40%	22
◇ Right Gin	40%	22
◇ Spirit of Hven Organic Gin	40%	26
◇ Spirit of Hven Organic Navy Strength Gin	57.1%	28
◇ Strane London Dry Merchant Strength Gin	47.4%	26
◇ Strane London Dry Uncut Strength Gin	76%	30
◇ Strane Navy Strength London Dry Gin	57.1%	26
◇ Strane Oaked Gin	55%	26
◇ Wannborga O Gin	40.1%	26

SWITZERLAND (11)



◇ 27 Premium Appenzeller Dry Gin	43%	22
◇ Arctic Velvet Gin	40%	24
◇ Breil Pur Gin	45%	22
◇ Matters Nutmeg Gin	44%	22
◇ Modernist Alpine Dry Gin	44%	22
◇ ingenious! Smoked & Salted Gin	42%	26
◇ ingenious! Swiss Blended Gin	45%	26
◇ Ojo De Agua Dry Gin	43%	22
◇ Studer Swiss Classic Gin	40%	26
◇ Studer Swiss Gold Gin	40%	26
◇ Xellent Edelweiss Gin	40%	28

THAILAND (4)



◇ Grandma's Jinn Gin	40%	22
Iron Balls Gin	40%	22
◇ Kristall Dry Gin	40%	22
Paper Lantern Sichuan Pepper Gin	40%	22

Paper Lantern Sichuan Pepper Gin

Created in Singapore, and made in Thailand. This 'international gin' incorporates some well loved Asian ingredients such as Sichuan pepper, ginger, galangal, lemongrass, and even makhwaen, a Thai pepper with fruity and woody overtones. We suggest this interesting 'local' gin with East Imperial Old World Tonic, and some fresh lemon slices.

UNITED STATES OF AMERICA (106)



◇ Anchor Genevieve Genever-Style Gin	47.3%	26
◇ Aria Portland Dry Gin	45%	26
Aviation Gin	42%	22
◇ Barr Hill Gin	45%	22
◇ Barr Hill Reserve Tom Cat Gin	43%	24
Barton Gin	40%	22
◇ Bath Gin	40%	24
◇ Battle Standard Barrel Finished Gin	45%	22
◇ Battle Standard Navy Strength Gin	57%	22
◇ Battle Standard Standard Strength Gin	45%	22
◇ Bell Ringer London Dry Gin	47.2%	22
◇ Berkshire Mountain Ethereal Gin	43%	22
◇ Blade Gin	47%	26
Bluecoat Barrel Reserve Dry Gin	47%	24
Bluecoat Dry Gin	47%	20
◇ Boardroom Gin	40%	22
◇ Bogart's Gin	41.3%	24
◇ Botanica Spiritvs Gin	45%	24
◇ Bourbon Barreled Big Gin	47%	24
◇ Brandon's Rock Town Gin	46%	22
◇ Breukelen Distilling Glorious Gin	45%	26
◇ Breukelen Distilling Glorious Oaked Gin	45%	26
Bristol Bay Gin	44%	22
Brooklyn Gin	40%	22
◇ CapRock Gin	41%	24
◇ Catoctin Creek Watershed Gin	46%	24
Chief Gowanus Gin	44%	20
Cold River Traditional Gin	47%	22
◇ Commerce Gin	42.5%	22
◇ Conniption Gin	44%	22
◇ Conniption Navy Strength Gin	57%	24
◇ Corsair Barrel-Aged Gin	46%	26
◇ Corsair Gin	44%	24
Corsair Steampunk Gin	45%	26

Corsair Steampunk

Corsair Distillery was originally based in Bowling Green, Kentucky but has since added production sites in Houston and Nashville. The team is known to be very experimental and this gin is no exception. To a traditional gin base, they have added smoked grains and highly aromatic hops, typically used for beer production. These extra ingredients create a big-flavoured and aromatic gin which is great in a tall Gin Buck with East Imperial Mombasa Ginger Beer.

◇ Counter Gin	40%	22
◇ Crater Lake Gin	47.5%	22
Death's Door Gin	47%	20
◇ DH Krahn Gin	40%	22
◇ Doc Porter's Gin	44%	22
Dorothy Parker Gin	44%	22
◇ Dry Fly Barrel Reserve Gin	40%	24
Dry Fly Gin	40%	22
◇ Ebb + Flow Gin	47%	24
◇ Ebb + Flow Old Tom Gin	44%	24
◇ Far North Gustaf Navy Strength Gin	57%	28
◇ Far North Solveig Gin	43.5%	26
Farmer's Organic Gin	46.7%	24
FEW American Gin	40%	22
◇ FEW Barrel Gin	46.5%	26
◇ FEW Breakfast Gin	42%	26
◇ FEW Publican Genever Gin	45%	26
Greenhook Ginsmiths Gin	47%	24
◇ Greenhook Ginsmiths Old Tom Gin	50.5%	26
◇ Green House Artisan Gin	40%	22
◇ Greylock Gin	40%	22
◇ Gun Club Gin	50%	22
Half Moon Orchard Gin	46%	24
◇ Hedge Trimmer Gin	42%	22
◇ Imagination Gin	40%	22
◇ J. Rieger Midwestern Dry Gin	46.1%	22
◇ Journeyman Bilberry Black Hearts Gin	45%	24
Junipero Gin	49.3%	24
Koval Dry Gin	47%	30
◇ Leopold's Navy Strength American Gin	57%	26
◇ Letherbee Gin	48%	26
◇ Monarch London Dry Gin	40%	22
◇ Napa Valley Distillery Old Hollywood Gin	40%	22
◇ Nautical American Gin	42%	22
Neversink Spirits Gin	43%	22

◇ New Amsterdam Straight Gin	40%	22
New Deal 33 Gin	46%	22
New Deal No. 1 Gin	46%	22
◇ No.209 Cabernet Sauvignon Barrel Reserve Gin	46%	26
◇ No.209 Chardonnay Barrel Reserve Gin	46%	26
◇ No.209 Kosher For Passover Gin	46%	26
◇ No.209 Sauvignon Blanc Barrel Reserve Gin	46%	26
◇ Norseman Pineapple Chipotle Gin	40%	26
Perry's Tot Navy Strength Gin	57%	24
Pinckney Bend Handcrafted American Gin	47%	24
Ransom Dry Gin	43%	20
Ransom Old Tom Gin	44%	20
◇ Small's Gin	43%	24
◇ Smooth Ambler Double Barrel Aged Gin	49.5%	26
◇ Smooth Ambler Greenbrier Gin	40%	26
◇ Spirit Works Distillery Gin	43%	24
◇ St. Augustine New World Gin	47%	24
St. George Botanivore Gin	45%	20
St. George Dry Rye Gin	45%	20
◇ St. George Dry Rye Reposado Gin	49.5%	26
St. George Terroir Gin	45%	20
◇ The Walter Collective Gin	45%	22
TRU Organic Gin	42%	24
◇ Uncle Val's Botanical Gin	45%	24
Uncle Val's Peppered Gin	45%	24
◇ Valentine Liberator Old Tom Gin	45.2%	24
◇ Valor West Coast Gin	47%	22
◇ Vapor Distillery Ginskey Barrel Rested Gin	47%	24
◇ Vapor Distillery Rhok Gin	47%	24
◇ Vim & Petal Gin	42%	22
◇ Voyager Dry Gin	42%	22
◇ Warwick Gin	40%	22
◇ Wire Works American Gin	45%	24
◇ Wire Works Special Reserve American Gin	43.9%	24

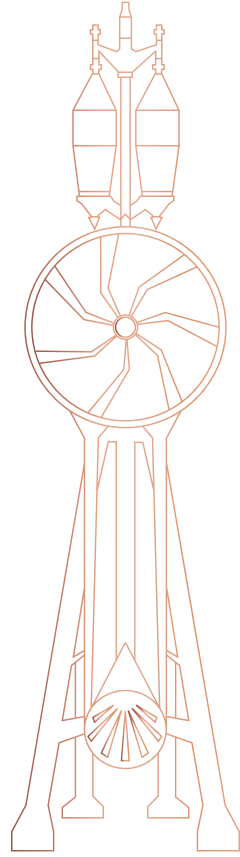
WALES (10)

◇ Brecon Botanicals Gin	43%	22
Brecon Gin	40%	22
◇ Da Mhile Farmhouse Botanical Organic Gin	42%	24
◇ Da Mhile Oak-Aged Gin	42%	22
◇ Da Mhile Seaweed Organic Gin	42%	24
◇ Eccentric Cardiff Aromatic Dry Gin	37.5%	22
◇ Eccentric Limbeck New Western Gin	45%	24
◇ Eccentric London Dry Gin	42%	22
◇ Eccentric Young Tom Gin	46%	26
◇ Pollination Gin	45%	28

RARE & COLLECTIBLE (37)

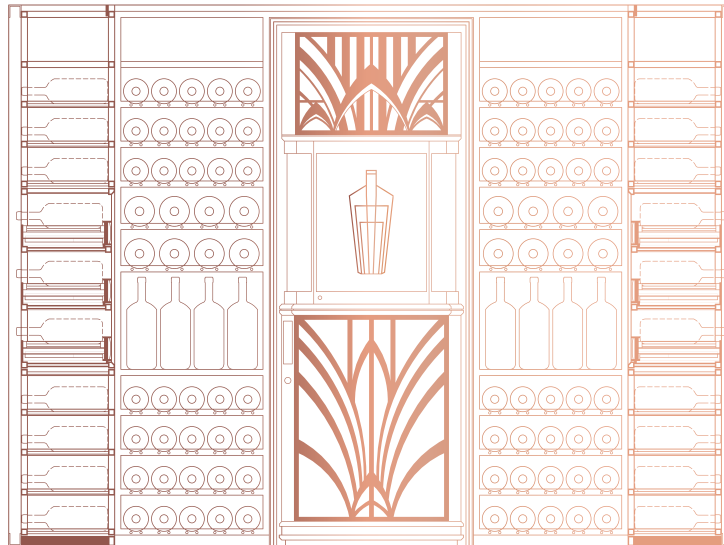
◇ A.A. Baker's Finest Dry Gin (1960s)	43%	55
◇ Aguila Negra Dry Gin (1960s)	40%	55
◇ Anty Gin	42%	70
◇ Aurum Dry Gin (1950s)	40%	65
◇ Beefeater Crown Jewel Gin (1990s)	50%	55
◇ Beefeater London Dry Gin (1960s)	47%	55
◇ Beefeater London Dry Gin (1970s)	40%	45
◇ Beefeater London Dry Gin (1980s)	40%	40
◇ Beefeater London Dry Gin (1990s)	40%	35
◇ Bell Sec Dry Gin (1910s)	40%	165
◇ Booth's Finest Dry Gin (1955)	40%	85
◇ Booth's Finest Dry Gin (1970s)	40%	45
◇ Booth's Finest Dry Gin (1961)	40%	70
◇ Booth's High & Dry London Dry Gin (1980s)	40%	40
◇ Buton Dry Gin (1950s)	40%	65
◇ Coates & Co.'s Plym-Gin Dry Gin (1960s-1970s)	46%	50
◇ Doney & Nipote Florentine Dry Gin (1930s)	44%	155
◇ Farquay's Special London Dry Gin (1930s)	40%	140
◇ Findlater, Mackie, Tod & Co. "Tod's" London Dry Gin (1970s)	40%	50
◇ Fulie's Estimable London Dry Gin (1960s)	40%	50
◇ Gilbey's London Dry Gin (1949-1959)	46.2%	66

◇ Gordon's Dry Export Gin (1950s)	47.3%	70
◇ Gordon's Dry Export Gin (1960s)	47.3%	55
◇ Gordon's Special Dry London Gin (1970s)	40%	45
◇ Gordon's Special Dry London Gin (1980s)	38%	45
◇ Gordon's Special Dry London Gin (1990s)	38%	35
◇ Grants Special Dry Gin	40%	60
◇ Lopez Hermanos Kintong's Gina Seca Gin (1960s)	40%	55
◇ Luxardo Dry Gin (1960s)	40%	60
◇ Martini & Rossi Bosford London Dry Gin (1960s)	43%	55
◇ Pisanti's Taby Cat Dry Gin (1950s)	40%	55
◇ Society's Gin (1970s)	40%	35
◇ Southwark Distillers "Cruiser" London Dry Gin (1970s)	40%	45
◇ Stock's Wapping Dry Gin (1980s)	38%	45
◇ Tanqueray Special Dry-Distilled English Gin (1960s)	47.3%	66
◇ The Hamilton Distilling Co.'s "Tower of London" Dry Gin (1970s)	43%	45
◇ V.F. Fleeton Portuguese Dry Gin (1960s)	40%	55



CRAWLEY'S IMPERIAL SHAKER MACHINE NO. 1

THE ATLAS CHAMPAGNE COLLECTION



Champagne; a sparkling wine produced adhering to strict regulations and exclusively from the regions of Champagne, France. The Comité Interprofessionnel du vin de Champagne (CIVC) is the governing body for all the wines from Champagne. They have developed a comprehensive set of rules for the production of Champagne, which are regarded as the strictest in the world - thus, every bottle of Champagne is of a guaranteed quality and a specific profile that is unlike any other sparkling wine in the world.



Champagne is celebrated for its versatility and its romantic, rich culture. Extensively documented, Champagne's history is both wide and deep. Having a broad spectrum of styles which are made to be enjoyed in different occasions, Champagne has been present at the world's parties for hundreds of years.

We hear stories of Champagne in war time, on imperial dining tables and being the favoured tipple of the great figures of history. Perhaps it is the tiny bubbles percolating in a golden liquid that cause us to embrace all of the emotions ensconced in Champagne: love, hatred, happiness and tears.

Now is your time to enjoy the finest Champagnes the world has to offer. The ATLAS Champagne Collection is one of the largest in Asia. It has been carefully curated to bring out these sensations and stories through the finest wines from the Champagne region. Whether it is a special occasion or not, we are delighted to offer you our very favourite Champagnes to celebrate the joys in life.

The ATLAS Champagne Collection is arranged into four categories:

La Sélection: featuring beautiful Champagnes for all moments.

Le Terroir: a dedication and celebration of the 17 Grand Crus of Champagne, the single village releases that are at the heart of Champagne culture.

La Prestige: an extraordinary list of the most renowned Champagnes drawn from the Parkview Family Cellar and from the most iconic Champagne houses.

Les Collections: exclusive to ATLAS, an exceptionally rare selection of Champagne "collections," which are designed to be enjoyed as a complete sets, for the grandest of evenings.

Go ahead and explore the remarkable world of Champagne. Our wine team stands ready to assist you in your journey.

Jack Cheung, *Family Sommelier*

Mason Ng, *Head Sommelier*

Lucas Liu, *Sommelier*

The ATLAS Champagne Collection On Date of Printing
282

La Sélection

- Blancs
- Rosés

Le Terroir – Montagne De Reims

- Ambonnay
- Bouzy
- Beaumont-sur-Vesle
- Louvois
- Mailly
- Puisieulx
- Sillery
- Verzenay
- Verzy

Le Terroir – Vallée De La Marne

- Ay
- Tours-sur-Marne

Le Terroir – Côte Des Blancs

- Avize
- Chouilly
- Cramant
- Le Mesnil-Sur-Oger
- Oger
- Oiry

Le Terroir – Mixed Grand Cru Villages

- Blancs
- Rosés

Le Prestige

- Krug
- Dom Pérignon
- Pol Roger
- Louis Roederer
- Salon
- Bollinger
- Taittinger
- Deutz
- G.H. Mumm
- Shipwreck Champagne

Les Collections

- Taittinger Collection
- Ulysse Collin Collection
- Jacques Selosse “Lieux-Dits” Collection

RARE & SPECIAL BOTTLES

The ATLAS Champagne Collection includes some genuine treasures, of which only one or two bottles are available. Because of the extraordinarily rare nature of these bottles, they will be crossed off once enjoyed by our guests. If your preferred Champagne is not currently available, please accept our most sincere apologies! We would be delighted to recommend a suitable alternative.

The □ symbol denotes special bottles from the Family Collection.

LA SÉLECTION

In La Sélection, we celebrate great diversity of Champagne, bringing you a wealth of styles to suit your mood and the occasion. There are famous Champagne houses represented here, and both vintage and non-vintage champagnes for you to choose from.

BLANCS

NON-VINTAGE

Roger Coulon "Heri-Hodie Grande Tradition" Premier Cru (d: 2016-06)	NV	120
Serge Mathieu "Cuvée Prestige" Diebolt-Vallois "Tradition"	NV	130
Geoffroy "Pureté" Brut Nature (d: 2015-11)	NV	140
Charles Heidsieck "Brut Réserve" (d: 2016)	NV	140
Diebolt-Vallois Blanc de Blancs	NV	145
Bruno Paillard "Première Cuvée" Extra-Brut (d: 2014-10)	MV	150
Geoffroy "Expression" Premier Cru (d: 2016-04)	NV	150
Tarlant "Tradition"	NV	150
Doyard "Cuvée Vendémiaire" Premier Cru Blanc de Blancs (d: 2016-05-04)	NV	150
Drappier Blanc de Noirs Brut Nature (d: 2016-09)	NV	160
Drappier "Sans Soufre" Blanc de Noirs Brut Nature (d: 2016-05)	NV	165
Agrapart "Les 7 Crus" (d: 2017-02)	NV	170
JM. Gobillard & Fils Blanc de Blancs	NV	170
Tarlant "Zero" Brut Nature (d: 2014-09)	NV	170
Louis Roederer "Carte Blanche" Demi-Sec	NV	175
Benoît Lahaye Blanc de Noirs Extra-Brut (d: 2016-10)	NV	180
Philipponnat "Royale Réserve Brut" (d: 2016-02)	NV	180
Nominé Renard Blanc de Blancs	NV	185
David Léclapart "L'Amateur" Premier Cru Blanc de Blancs Pas Dosé (v:2013)	NV	200
Rosés de Jeanne / Cedric Bouchard "Côte de Val Vilaine" Blanc de Noirs (v: 2014 d: 2016-04)	NV	200
Franck Pascal "Reliance" Brut Nature (d: 2014-10-02)	NV	220
Taittinger "Cuvée Prestige"	NV	220
Bêrêche & Fils "Les Beaux Regards" Blanc de Blancs	NV	220
Ulysse Collin "Les Maillons" Blanc de Noirs Extra-Brut (d: 2016-02-18)	NV	220
Françoise Bedel "Entre Ciel et Terre" (d: 2014-10)	NV	230
Vouette & Sorbée "Fidèle" Blanc de Noirs (d: 2016-11-01)	NV	230

Chartogne-Taillet "Les Beaux Sens" Blanc de Meunier Extra-Brut (v: 2011)	NV	220
Chartogne-Taillet "Fiacre" (v:2010)	NV	220
Chartogne-Taillet "Orizeaux" Blanc de Noirs Extra-Brut (v:2011)	NV	250
Drappier "Quattuor" Blanc de Blancs	NV	260
George Laval Cumières Premier Cru Brut Nature (d: 2016-12-06)	NV	270
Tarlant "Cuvée Louis" Extra-Brut (d: 2014-07)	NV	290
Benoît Lahaye "Violaine" Brut Nature (d: 2014-11)	NV	290
Laherte Frères "Les Empreintes" Extra-Brut (d: 2012-03)	NV	300
Bérêche & Fils "Reflet d'Antan" (d: 2016-04)	NV	300
Marie-Courtin "Efflorescence" Blanc de Noirs Extra-Brut	NV	340
Krug "Grande Cuvée"	NV	340
Gosset "15 ans de Cave a Minima"	NV	360
□ David Léclapart "L'Apôtre" Premier Cru Blanc de Blancs Pas Dosé (v: 2009)	NV	380
Tarlant "BAM!" Brut Nature (d: 2014-11-11)	NV	380
□ David Léclapart "L'Artiste" Premier Cru Blanc de Blancs Pas Dosé (v: 2010)	NV	430
□ David Léclapart "L'Astre" Premier Cru Blanc de Noirs Pas Dosé	NV	450
Guillaume Selosse "Au Dessus du Gros Mont" Blanc de Blancs Extra-Brut (d: 2015-06-16) *Signature par Guillaume Selosse pour ATLAS	NV	950

VINTAGE

Deutz "Classic"	2006	150
Serge Mathieu "Brut Millésime" Blanc de Noirs	2008	180
Drappier "Millésime Exception" (d: 2016-01)	2012	180
Pierre Gimonnet "Gastronome" Blanc de Blancs (d: 2016-12-28)	2012	180
Geoffroy "Volupté" Premier Cru (d: 2016-06)	2008	190
Louis Roederer Millésime	2008	200
Deutz Blanc de Blancs	2004	200
Pierre Gimonnet "Oenophile" Blanc de Blancs Extra-Brut (d: 2017-02-22)	2008	210
Louis Roederer "Philippe Starck" Brut Nature	2006	210
Louis Roederer Blanc de Blancs	2009	220
Joseph Perrier "Cuvée Royale"	2008	220
Blanc de Noirs Brut Nature (d: 2016-04-20)		
Larmandier-Bernier "Terre de Vertus"	2010	230
Premier Cru Blanc de Blancs Brut Nature		
Bruno Paillard "Assemblage" (d: 2012-03)	2004	230
Louis Roederer Blanc de Blancs	2010	240
Nominé-Renard "Special Club"	2011	240
Pierre Gimonnet "Grands Terroirs de Chardonnay" Blanc de Blancs (d: 2016-11-08)	2010	240

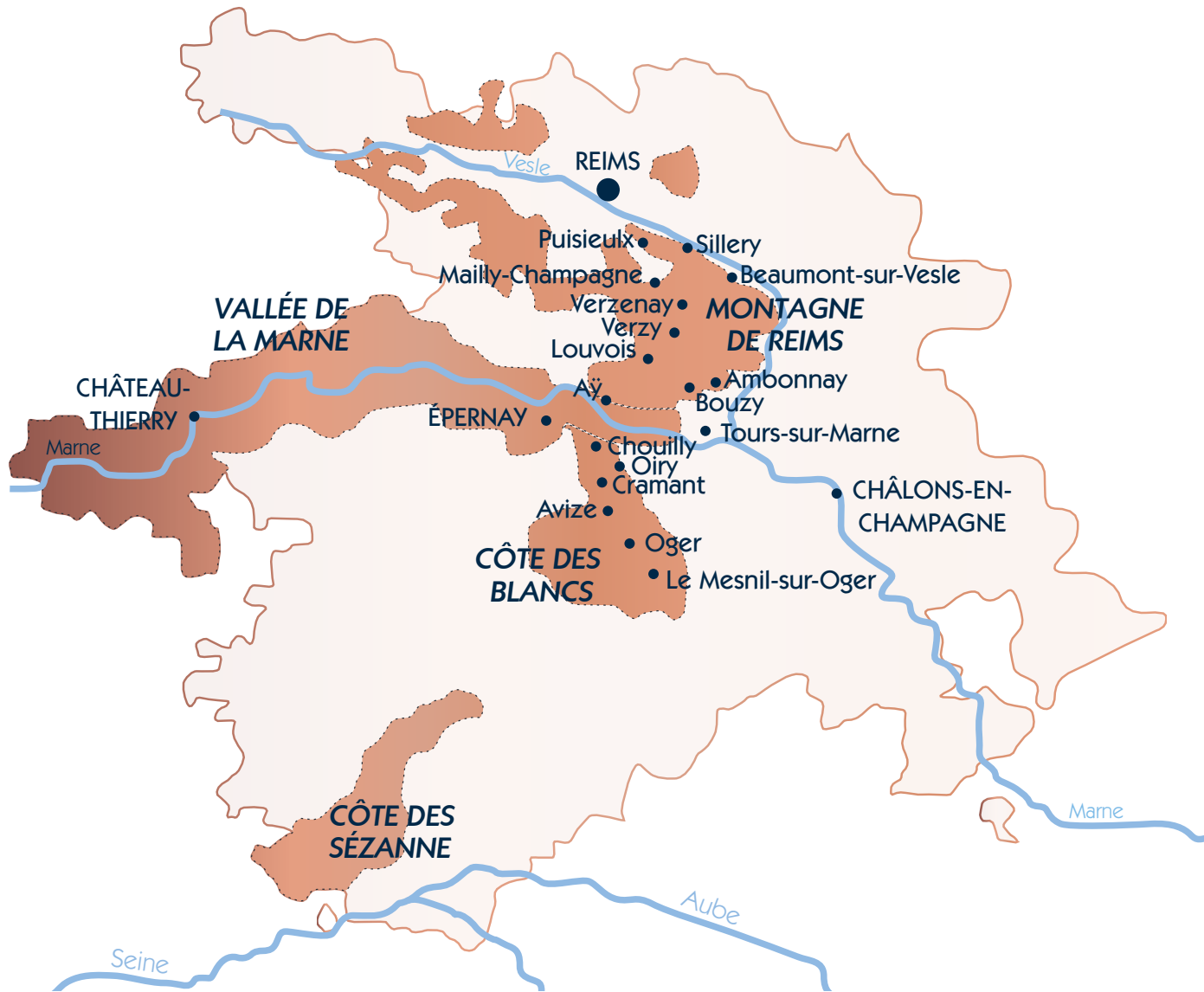
Laherte Frères "Les Vignes d'Autrefois" Blanc de Noirs Extra-Brut (d: 2011-01)	2007	240
Charles Heidsieck Millésime (d: 2015)	2005	260
Drappier "Grande Sèndrée" (d: 2015-05)	2008	270
Roses de Jeanne / Cedric Bouchard	2011	280
"Les Ursules" Blanc de Noirs (d: 2015-04)		
Pol Roger Millésime	2006	280
Gosset "Grand Millésime"	2006	280
Chartogne-Taillet "Chemin de Reims"	2010	290
Blanc de Blancs Extra-Brut		
Francis Boulard "Les Rachais"	2008	300
Blanc de Blancs Extra-Brut (d: 2015-03-07)		
Doyard "Clos de l'Abbaye" Premier Cru	2011	340
Blanc de Blancs Extra-Brut		
Duval-Leroy "Authentis Cumières" Premier Cru Blanc de Noirs	2003	390
Vilmart & Cie "Coeur de Cuvée" Premier Cru (d: 2014-03)	2007	400
Tarlant "La Vigne d'Or" Blanc de Meuniers Brut Nature (d: 2013-02-20)	2003	400
Charles Heidsieck "Blanc de Millénaires" Blanc de Blancs	1995	450
Barons de Rothschild Blanc de Blancs	2006	500
Boërl & Kroff "B de Boërl & Kroff" (d: 2011-11)	2000	1000

ROSÉS

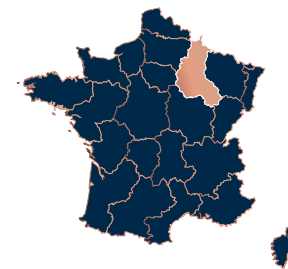


Diebolt-Vallois Rosé	NV	160
Guy Charlemagne Rosé	NV	170
Drappier Rosé Brut Nature (d: 2016-08)	NV	170
Pierre Gimonnet "Rosé de Blancs" (d: 2017-02)	NV	180
Bruno Paillard "Rosé Première Cuvée" Extra-Brut (d: 2014-10)	NV	190
Philipponnat "Royale Réserve Rosé" (d: 2015-09)	NV	210
Pierre Péters "Rosé for Albane"	NV	250
Larmandier-Bernier "Rosé de Saignée"	NV	250
Premier Cru Extra-Brut		
Laherte Frères "Les Beaudiers" Rosé de Saignée Extra-Brut (d: 2012-01)	NV	300
Gosset "Celebris" Rosé Extra-Brut	2007	500

CHAMPAGNE



 Grand Cru Vineyards



LE TERROIR

In this section, we adhere to the the “échelle des crus” system that was developed in the mid-1900s. This system divides the villages of the Champagne region into three levels of quality. From the highest quality tier, we present the 17 Grand Crus here, which make up just nine percent of the villages in the Champagne region.

MONTAGNE DE REIMS

AMBONNAY

Paul Déthune “Brut” (d: 2013-11)	NV	160
Paul Déthune Rosé (d: 2014-08)	NV	170
Eric Rodez “Cuvée des Crayères” (d: 2015-05)	NV	180
Paul Déthune Blanc de Noirs (d: 2014-09)	NV	210
Paul Déthune “Cuvée Prestige - Princesse des Thunes” (d: 2013-10)	NV	240
Eric Rodez Blanc de Noirs (d: 2016-05)	NV	270
H. Billiot & Fils “Cuvée Laetitia” (d: 2013-10-21)	NV	300
Eric Rodez Rosé (d: 2016-05)	NV	300
Egly-Ouriot “Les Crayères” Blanc de Noirs	NV	380
Paul Déthune “Cuvée à l’Ancienne” (d: 2012-01)	2006	400
Marguet Père & Fils “Le Parc”	2011	550
Blanc de Blancs Extra-Brut (d: 2016-03)		
Marguet Père & Fils “La Grande Ruelle” Blanc de Noirs Extra-Brut (d: 2016-03)	2011	550
Marguet Père & Fils “Les Bermonts” Blanc de Blancs Extra-Brut (d: 2014-12)	2010	550
Marguet Père & Fils “Les Crayères” Extra-Brut (d: 2016-03)	2011	550
Marguet Père & Fils “Les Crayères” Extra-Brut (d: 2014-07)	2009	600
Jacques Selosse Lieux-Dits “Le Bout du Clos” Blanc de Noirs Extra-Brut (d: 2015-02-03)	NV	720

BEAUMONT-SUR-VESLE

Paul Sadi “Clos Virgile”	2012	230
--------------------------	------	-----

BOUZY

Pierre Paillard "Brut" (d: 2014-09)	NV	150
Pierre Paillard "Les Parcelles" Extra-Brut (V:2011)	NV	155
Pierre Paillard Millésime (d: 2014-07)	2004	180
Baron d'Auvergne "La Marguerite en Folie"	NV	260
Pierre Paillard "Les Mottelettes"	2010	260
Blanc de Blancs Extra-Brut (d: 2016-03)		
Pierre Paillard "Les Maillerettes"	2010	270
Blanc de Noirs Extra-Brut (d: 2016-04)		
Duval-Leroy "Authentis Bouzy" Blanc de Noirs Brut Nature	2005	300
Camille Savès "Cuvée Anaïs Jolicoeur"	2012	320
Brice "Bouzy Millésime"	2008	360
Camille Savès "Les Loges" Blanc de Noirs	NV	370
Benoît Lahaye "Le Jardin de la Grosse Pierre" Brut Nature (d: 2016-02)	2011	400

LOUVOIS

Guy de Chassey	NV	140
Guy de Chassey "Cuvée Antide"	NV	240

MAILLY

Ernest Remy Blanc de Noirs	NV	230
Ernest Remy Blanc de Noirs Demi-Sec	NV	230
Champagne Mailly "L'Intemporelle"	2007	380

PUISIEULX

François Chaumont Blanc de Blancs	2008	180
François Secondé "Les Petites Vignes"	NV	300

SILLERY

François Secondé Blanc de Blancs	2008	200
François Secondé "La Loge" Blanc de Noirs	NV	230

VERZENAY

Bernard Hatte "Cuvée Benjamin"	2012	240
Godmé Père et Fils Brut Millésimé	1999	300

VERZY

Louis de Sacy "Grand Soir"	2003	400
----------------------------	------	-----

VALLÉE DE LA MARNE



Aÿ

Gaston Chiquet "Blanc de Blancs d'Aÿ" (d: 2016-03)	NV	220
Philliponnat "Le Léon" Blanc de Noirs Extra-Brut (d: 2015-02)	2006	460
Jacquesson "Vauzelle Terme" Blanc de Noirs Extra-Brut (d: 2013-02-13)	2004	610
□ Henri Giraud "Fût de Chêne"	1998	720
□ Henri Giraud "Fût de Chêne"	1999	780
□ Jacques Selosse Lieux-Dits "La Côte Faron" Blanc de Noirs Extra-Brut (d: 2014-03-04)	NV	820
□ Henri Giraud Blanc de Blancs	2004	920
□ Henri Giraud "Argonne" Blanc de Blancs	2002	1020

TOURS-SUR-MARNE

Harlin Pere et Fils "Cuvée Ephemere" Blanc de Noirs Extra-Brut (d: 2016-04)	2010	450
Lamiable "Cuvée Pheerie" Blanc de Blancs	2008	500

CÔTE DES BLANCS



AVIZE

Franck Bonville "Camille Bonville" Blanc de Blancs	NV	180
Varnier-Fannière "Cuvée St-Denis" Blanc de Blancs	NV	260
Pierre Callot "Clos Jacquin" Blanc de Blancs	NV	300
Agrapart & Fils "Avizoise" Blanc de Blancs Extra-Brut (d: 2015-02)	2008	340
Larmandier-Bernier "Les Chemins d'Avize" Blanc de Blancs Extra-Brut	2010	370
Jacquesson "Champ Caïn" Blanc de Blancs Extra-Brut (d: 2013-02-27)	2004	620

CHOUILLY

Lenoble "Les Aventures" Blanc de Blancs	NV	330
Jack Legras "Cuvée Le Mont Aigu" Blanc de Blancs	NV	340
R&L Legras "Saint-Vincent" Blanc de Blancs	2000	350
Veuve J. Lanaud "Les Prêtresses" Blanc de Blancs (d: 2016-07-30)	2008	600

CRAMANT

Diebolt-Vallois "Prestige" Blanc de Blancs	NV	200
G.H. Mumm "Mumm de Cramant" Blanc de Blancs (d: 2014-02)	NV	250
Larmandier-Bernier "Vieille Vigne de Cramant" Blanc de Blancs Extra-Brut	2006	260
Bonnaire "Prestige" Blanc de Blancs	NV	300
Diebolt-Vallois "Fleur de Passion" Blanc de Blancs	2007	380

LE MESNIL-SUR-OGER

Guy Charlemagne "Mesnillésime" Blanc de Blancs	2004	240
Pierre Moncuit "Nicole Moncuit" Vieille Vignes Blanc de Blancs	2004	290
Pierre Moncuit "Nicole Moncuit" Vieille Vignes Blanc de Blancs	2005	300
Bruno Paillard Le Mesnil Blanc de Blancs (d: 2003-12)	1995	360
Bruno Paillard Le Mesnil Blanc de Blancs (d: 2015-02)	1990	400
Pierre Péters "Cuvée Spéciale - Les Chétillons" Blanc de Blancs	2002	560
□ Jacques Selosse "Lieux-Dits Les Carelles" Blanc de Blancs Extra-Brut (d: 2014-02-12)	NV	680

OGER

Jean Milan "Terres de Noël" Blanc de Blancs	2009	230
Pierre Gimonnet "Special Club" Blanc de Blancs	2012	290
Franck Bonville "Les Belles Voyes" Blanc de Blancs	NV	310
Claude Cazals "Clos Cazals" Blanc de Blancs Extra-Brut	2002	450

OIRY

Christophe Martin Blanc de Blancs	2010	310
-----------------------------------	------	-----

MIXED GRAND CRU VILLAGES



BLANCS

Benoît Lahaye Brut Nature (d: 2016-10)	NV	160
Benoît Lahaye Millésime Extra-Brut (d: 2016-10)	2011	175
Delamotte Blanc de Blancs	NV	180
Chapuy Blanc de Blancs Millésime	2008	190
Pierre Péters "Reserve Privée" Blanc de Blancs	NV	190
Lancelot-Royer "Cuvée des Chevaliers" Blanc de Blancs	NV	190
Chapuy "Livree Noire"	2006	200
Pierre Péters "Cuvée de Réserve" Blanc de Blancs	NV	200
Bruno Paillard Blanc de Blancs Extra-Brut (d: 2014-03)	MV	210
Lallier "Millesimés"	2005	230
Pol Roger Blanc de Blancs	2008	240
Delamotte Blanc de Blancs	2007	240
Taittinger "Prélude"	NV	250
Ayala Blanc de Blancs (d:2015-09)	2008	250
Duval-Leroy Blanc de Blancs	2006	250
Benoît Lahaye "Late Disgorgement" Millésime Extra-Brut (d: 2016-10)	2007	270
Petit et Bajan "Nuit Blanche" Blanc de Blancs (d: 2017-05-03)	NV	270
Philipponnat "Cuvée 1522" (d: 2016-03)	2006	300
Egly-Ouriet "Vieillessement Prolongé" Extra-Brut	NV	300
Delamotte Blanc de Blancs	2002	320
Ayala "Cuvée Perle d'Ayala"	2005	390
Bruno Paillard Blanc de Blancs (d: 2013-04)	2004	470

ROSÉS

Pierre Paillard Rosé (d: 2014-11)	NV	180
Marguet Père & Fils "Shaman 12" Rosé Extra-Brut	NV	190
Petit et Bajan "Nymphaea" Rosé (d: 2017-05-03)	NV	300
Bruno Paillard "Nec Plus Ultra" Rosé (d: 2015-07)	2003	550

LA PRESTIGE

This sections shares our family's philosophy about being a patient and persistent collector of some of the finest things in the word. This value is shared by our family and many of the traditional Champagne families. Here we present truly extraordinary Champagnes from the Parkview Family Cellar and some of the greatest Champagne houses. "Prestige Cuvée" is the word used by the houses to describe their, and therefore our, best offerings.

KRUG

Behind every precious drop of Krug stands the dream of a visionary. One man who, long before others, understood that the essence of Champagne is pleasure. Over 170 years ago, Joseph Krug broke with convention to follow this vision. In doing so, he created some of most generous expressions of Champagne each year. This tradition continues to this day.

□ Krug "Clos d'Ambonnay" Grand Cru Blanc de Noirs	1995	5380
□ Krug "Clos d'Ambonnay" Grand Cru Blanc de Noirs	1996	4010
□ Krug "Clos d'Ambonnay" Grand Cru Blanc de Noirs	2000	4750
□ Krug "Clos du Mesnil" Grand Cru Blanc de Blancs	1988	4000
□ Krug "Clos du Mesnil" Grand Cru Blanc de Blancs	1989	2980
□ Krug "Clos du Mesnil" Grand Cru Blanc de Blancs	1990	2880
□ Krug "Clos du Mesnil" Grand Cru Blanc de Blancs	1992	2500
□ Krug "Clos du Mesnil" Grand Cru Blanc de Blancs	1998	1700
□ Krug "Clos du Mesnil" Grand Cru Blanc de Blancs	2000	1700
□ Krug "Clos du Mesnil" Grand Cru Blanc de Blancs	2002	1600

DOM PÉRIGNON

First released in 1921, during the dawn of the Art Deco era, this Champagne bears the same name as the famous Benedictine monk who arguably created Champagne. One of the first “Cuvée” concepts, it was soon destined to be one of the blue bloods of Champagne.

□ Dom Pérignon “Oenothèque”	1995	980
□ Dom Pérignon “Plénitude Troisième (P3)”	1971	3850
□ Dom Pérignon “Réserve de l’Abbaye”	1990	2450
□ Dom Pérignon	1947	4100
□ Dom Pérignon	1964	2000
□ Dom Pérignon	1969	1900
□ Dom Pérignon	1971	1800
□ Dom Pérignon	1973	1800
□ Dom Pérignon	1976	1600
□ Dom Pérignon	1990	900
Dom Pérignon	2006	450
Dom Pérignon (Jeroboam)	2000	3450
□ Dom Pérignon Rosé	1996	1800

POL ROGER

The relationship of Pol Roger and the beloved Sir Winston Churchill was never a commercial or superficial one. Pol Roger had been the favourite champagne of Churchill since 1908 and had even befriended Madame Odette Pol-Roger at a party at the British Embassy in Paris in 1944. In 1984 Pol Roger honored this legendary relationship with the release of the Pinot Noir-dominant Cuvée Sir Winston Churchill.

Pol Roger “Cuvée Sir Winston Churchill”	1979	2380
Pol Roger “Cuvée Sir Winston Churchill”	1988	1880
Pol Roger “Cuvée Sir Winston Churchill”	2002	480
Pol Roger “Cuvée Sir Winston Churchill” (Magnum)	1999	1350
□ Pol Roger “Cuvée Sir Winston Churchill” (Magnum)	2002	1350
Pol Roger “Cuvée Sir Winston Churchill” (Magnum)	2004	1350
Pol Roger “Cuvée Sir Winston Churchill” (Jeroboam)	1988	7000

LOUIS ROEDERER

Being the favourite house of Tsar Alexander II, Louis Roederer technically created the world's first "Prestige Cuvée" for the paranoid Tsar in 1876. Living in fear of assassination by poisons and bombs, he ordered a Champagne in clear bottles and with a flat bottom, to be made and served for the famous Three Emperors Dinner at Café Anglais in Paris. The first commercially available vintage of Cristal was 1945, many decades after the original release. Yet the famous story of its founding remains part of Champagne's rich history.

□ Louis Roederer "Cristal"	1964	4000
□ Louis Roederer "Cristal"	1966	3700
□ Louis Roederer "Cristal"	1976	2500
□ Louis Roederer "Cristal"	1981	1550
□ Louis Roederer "Cristal"	1983	1300
□ Louis Roederer "Cristal"	1993	880
□ Louis Roederer "Cristal"	1996	950
□ Louis Roederer "Cristal"	1997	920
□ Louis Roederer "Cristal"	2000	900
□ Louis Roederer "Cristal"	2009	700

SALON

Salon was created as a private label, from similar beginnings as the more famous Cristal. Since its first vintage in 1905, Salon was shared among private clients and friends of the visionary Eugène Aimé Salon, who believed that the Chardonnay in Le-Mesnil-Sur-Oger could make fine and elegant Champagnes without blending with Pinot Noir and Pinot Meunier. And so the idea of Blanc de Blancs was born.

□ Salon "S" Le Mesnil Grand Cru Blanc de Blancs	1971	7000
□ Salon "S" Le Mesnil Grand Cru Blanc de Blancs	1982	3800
□ Salon "S" Le Mesnil Grand Cru Blanc de Blancs	1985	3800
□ Salon "S" Le Mesnil Grand Cru Blanc de Blancs	1990	4000
□ Salon "S" Le Mesnil Grand Cru Blanc de Blancs	1995	3500
□ Salon "S" Le Mesnil Grand Cru Blanc de Blancs	1996	3500
□ Salon "S" Le Mesnil Grand Cru Blanc de Blancs	1997	2000
□ Salon "S" Le Mesnil Grand Cru Blanc de Blancs	1999	2000
□ Salon "S" Le Mesnil Grand Cru Blanc de Blancs	2002	980
□ Salon "S" Le Mesnil Grand Cru Blanc de Blancs	2006	900

BOLLINGER

Known as the famed James Bond Champagne, Bollinger is one of most respected Champagne houses. Bollinger's famous Prestige Cuvée, "La Grande Année" is not the only sought-after label from this house, The "Vieilles Vignes Française" made from parcels of ungrafted Pinot Noir and the late disgorgement "Récemment Dégorgé (R.D.)" label are also on the top of connoisseurs' lists.

□ Bollinger "Récemment Dégorgé (R.D.)" Extra Brut (<i>Silver Jubilee Edition</i>)	1966	2980
Bollinger "Récemment Dégorgé (R.D.)" Extra Brut	1975	1300
Bollinger "Récemment Dégorgé (R.D.)" Extra Brut	1979	1400
Bollinger "Récemment Dégorgé (R.D.)" Extra Brut	1981	1200
□ Bollinger "Récemment Dégorgé (R.D.)" Extra Brut (<i>Magnum</i>)	1973	3500
□ Bollinger "Vieilles Vignes Française" Blanc de Noirs	1986	4800
Bollinger "Vieilles Vignes Française" Blanc de Noirs	1989	4500
Bollinger "Vieilles Vignes Française" Blanc de Noirs	1990	6500
Bollinger La Grande Année	1989	750
Bollinger La Grande Année	2005	450

TAITTINGER

The name Taittinger is very much associated with the French political world. Pierre Taittinger, was a powerful politician and a champagne distributor. Pierre restored the House of the Counts of Champagne in Reims during his lifetime, before it was unfortunately destroyed by the Germans during the World War II. The Prestige Cuvée of Taittinger was created to commemorate the powerful reign of the Counts of Champagne during the Medieval Ages.

Taittinger "Comte de Champagne" Blanc de Blancs	1982	1500
Taittinger "Comte de Champagne" Blanc de Blancs	2006	400
□ Taittinger "Comte de Champagne" Blanc de Blancs (Magnum)	1986	2900

DEUTZ

Established in 1838, Deutz has a glorious past. Being the favourite Champagne of the English in the 1900s, Deutz exported more than 600,000 bottles to the United Kingdom by then. The company is a living fossil, which is a testament to the glorious history of Champagne as one of the most celebrated drinks in the world. Nowadays Deutz is a rare find, especially its prestigious tribute to the owner, the Cuvée William Deutz.

Deutz "Cuvée William Deutz"	1961	3000
Deutz "Cuvée William Deutz"	2002	400
Deutz "Cuvée Amour de Deutz"	1999	400
Deutz "Cuvée Amour de Deutz"	2005	480
□ Deutz "Cuvée William Deutz" (Jeroboam)	1990	4200

G . H . M U M M

Established in 1827, this German family created the famous "Cordon Rouge", a silk ribbon on each bottle of Champagne, which became iconic in the Champagne bottle designs. By 1904, Mumm became the official supplier of Champagne to British royalty. Mumm's prestige cuvée is named after the visionary man who led Champagne Mumm into quality and international prestige in the 20th Century.

□ G.H. Mumm "Cuvée René Lalou"	1973	980
G.H. Mumm "Cuvée René Lalou"	1976	1200

SHIPWRECK CHAMPAGNE

On 26 October 1916, amidst the devastation of the World War I, a small Swedish smuggling schooner named “Jönköping” was being quietly loaded with contraband in the city of Gävle in the south of Sweden. Among the packing list was a modest 3,000 bottles of Champagne, tasted, liked and ordered by Tsar Nikolai II, the last Emperor of the Russian Empire. It was Jönköping’s tenth smuggling journey of the year. Everything seemed to go smoothly, with none of the crew suspecting that this trip would be their last.

The day was 3 November of 1916, when a German U-22 submarine intercepted this unlucky Jönköping off the Finnish coast and sank it along with its haul of precious contraband. The Champagnes together with the Jönköping, since then, quietly slept at a depth of 64 meters under the sea, for the next 82 years.

Jönköping was salvaged in 1998, its cargo held the 1907 Heidsieck & Co. Monopole “Goût Américain”, a Champagne which was also served on the famous Titanic (ironically also sunk in 1912). Fortunately, due to the perfect pressure and temperature deep in the Baltic sea, many of the original 3,000 Champagne bottles made it through this 90-year transcendence of time safely, with corks intact and no leakage.

□ Heidsieck Monopole & Co. “Goût Américain” 1907 190,700

LES COLLECTIONS

In this section we feature some of the core collections which our family carefully purchased and curated over the years. These treasured collections reach a synergy when presented as a series and will bring you a unique experience.

We would like to share the stories they want to tell, like chapters of a grand novel, only complete when they are put together.

TAITTINGER COLLECTION

“Imagine a bottle of Champagne as a canvas. Imagine that the wine it contains is a muse. Then introduce a great artist to a great vintage...”

It is believed by many winemakers that winemaking is like painting, where the grapes are the canvas provided by the almighty Mother Nature. Champagne Taittinger nurtured the idea of art in wine and wine in art, inviting world famous artists to design the labels for champagne bottles. The birth of the Taittinger Collection series sees its 13th member in 2016. This collection is not just a list of the finest Champagnes, but also an archive of the quintessence of modern art.

- | | |
|---|------|
| □ Taittinger Collection Series #1 “Vasarely” | 1978 |
| □ Taittinger Collection Series #2 “Arman” | 1981 |
| □ Taittinger Collection Series #3 “Masson” | 1982 |
| □ Taittinger Collection Series #4 “Da Silva” | 1983 |
| □ Taittinger Collection Series #5 “Lichtenstein” | 1985 |
| □ Taittinger Collection Series #6 “Hartung” | 1986 |
| □ Taittinger Collection Series #7 “Imai” | 1988 |
| □ Taittinger Collection Series #8 “Corneille” | 1990 |
| □ Taittinger Collection Series #9 “Matta” | 1992 |
| □ Taittinger Collection Series #10 “Zao Wou Ki” | 1998 |
| □ Taittinger Collection Series #11 “Rauschenberg” | 2000 |
| □ Taittinger Collection Series #12 “Sow” | 2002 |

Complete set of 12 bottles 11000

ULYSSE COLLIN "QUINTET" COLLECTION



In 2001, after his apprenticeship with Jacques-Selosse, Olivier Collin was inspired by the master Anselme Selosse to create his own Champagne with part of his family's vineyards in Sézennais. Driven by the same passion towards the land, Olivier carefully made Champagnes with respect to nature as much as possible.

This collection showcases the four parcels which Olivier has separately vinified and perfected throughout the years, a true expression of land and respect for the terroir.

- Ulysse Collin Quintet Collection #1 2010
"Les Enfers" Blanc de Blancs Extra Brut
- Ulysse Collin Quintet Collection #2 2012
"Les Perrières" Blanc de Blancs Extra Brut
- Ulysse Collin Quintet Collection #3 2011
"Les Roises" Blanc de Blancs Extra Brut
- Ulysse Collin Quintet Collection #4 2012
"Les Maillons" Rosé de Saignée Extra Brut
- Ulysse Collin Quintet Collection #5 2012
"Les Maillons" Blanc de Noirs Extra Brut

Complete set of 5 bottles 2000

JACQUES SELOSSE “LIEUX-DITS” COLLECTION

Champagne making was never easy, and has always been time and labour intensive. Due to the large amounts of capital required, Champagne production was originally dominated by big houses with financial power: Les Grande Marques.

Les Grande Marques, apart from owning vineyards and producing their own grapes, also purchased grapes from farmers, but these relationships did not hold for long.

As the technology and know how became more accessible to the farmers, they realised it was more profitable to make and bottle their own Champagnes; thus began a flourishing era of Grower (Récoltant-Manipulant) Champagne houses.

Among the first was Jacques Selosse, who started his humble Champagne house in the 1950s. Now the house is in the hands of Jacques' son Anselme, who brought the house to the pinnacle of Burgundian terroir-driven, biodynamic winemaking in Champagne.

This collection showcases the six specific parcels (Lieux-Dits) identified by Anselme as special and expressive in style, which he has separately vinified and perfected through the years.

- | | |
|--|----|
| □ Jacques Selosse “Lieux-Dits Sous Le Mont”
Extra Brut Blanc de Noirs (<i>Mareuil-sur-Aÿ, Premier Cru</i>) | NV |
| □ Jacques Selosse “Lieux-Dits Le Bout du Clos”
Extra Brut Blanc de Noirs (<i>Ambonnay, Grand Cru</i>) | NV |
| □ Jacques Selosse “Lieux-Dits La Côte Faron”
Extra Brut Blanc de Noirs (<i>Aÿ, Grand Cru</i>) | NV |
| □ Jacques Selosse “Lieux-Dits Les Carelles”
Extra Brut Blanc de Blancs (<i>Le Mesnil-sur-Oger, Grand Cru</i>) | NV |
| □ Jacques Selosse “Lieux-Dits Les Chantereines”
Extra Brut Blanc de Blancs (<i>Avize, Grand Cru</i>) | NV |
| □ Jacques Selosse “Lieux-Dits Chemin de Châlons”
Extra Brut Blanc de Blancs (<i>Cramant, Grand Cru</i>) | NV |

Complete set of 6 bottles 5000



FINE SPIRITS OF THE WORLD

WHISK(E)Y

One of our other great spirituous loves is the world of fine whiskies. At ATLAS, we maintain a rich, respectful selection of Scotch, Irish, Japanese and American whiskies. We are particularly proud to offer a diverse range of single malts from all regions and of a broad range of age statements. From sherry cask finishes to smoke-driven malts, we can propose a whisk(e)y for all palates and occasions. *Sláinte!*

United States of America, Bourbon

Blanton's Gold Edition Bourbon	51.5%	22
Booker's 8 Year Bourbon	65%	34
Bulleit Bourbon	45%	18
Four Roses Single Barrel Bourbon	50%	30
High West American Prairie Bourbon	46%	16
Jefferson's Very Small Batch Kentucky Straight Bourbon	41.2%	20
Jefferson's Reserve Bourbon	45.1%	24
Maker's Mark Bourbon	45%	16
□ Michter's US*1 Small Batch Bourbon	45.7%	20
Michter's 10 Year Single Barrel Bourbon	47.2%	36
Pappy Van Winkle Family Reserve 23 Year Bourbon	47.8%	460
Rebel Yell Small Batch Reserve Bourbon	45.3%	18
Rowan's Creek Bourbon	50.1%	18
Willett Pot Still Reserve Bourbon	47%	20
Woodford Reserve Bourbon	45.2%	28

The □ symbol denotes special bottles from the Family Collection.

United States of America, Rye

Bullet Rye	45%	20
Michter's 10 Year Single Barrel Straight Rye Whiskey	46.4%	38
Michter's US*1 Single Barrel Rye Whiskey	42.4%	18
High West Double Rye Whiskey	46%	16
Rebel Yell Small Batch Rye Whiskey	45%	16
Rittenhouse Rye 100	50%	20
Vulson White Rhino Rye Spirit	41%	18
WhistlePig 10 Year Rye Whiskey	50%	32
Willett 3 Year Single Barrel Cask Strength Rye Whiskey	56.3%	24
Willett 6 Year Single Barrel Cask Strength Rye Whiskey	58.7%	30
Willett 7 Year Single Barrel Cask Strength Rye Whiskey	57.2%	34
Willett 8 Year Single Barrel Cask Strength Rye Whiskey	58.8%	36

United States of America, Other Whiskeys

High West Campfire Whiskey	46%	20
Jack Daniel's Tennessee Whiskey	40%	16
Death's Door White Whiskey	40%	16

Canada, Canadian Whisky

Crown Royal	40%	16
-------------	-----	----

Ireland, Irish Whiskey

Green Spot Single Pot Still Irish Whiskey	40%	20
Jameson Irish Whiskey	40%	16
Redbreast 12 Year Pot Still Irish Whiskey	40%	20
Redbreast 15 Year Pot Still Irish Whiskey	46%	26

Japan, Japanese Blended Whisky

Nikka From The Barrel	51.4%	24
Nikka Coffey Grain	45%	26
Hibiki 12 Year	43%	40
Hibiki 17 Year	43%	60
□ Hibiki "Mellow Harmony"	40%	190
□ Hibiki Special Bottle Collection 2012, 21 Year	43%	240
□ Hibiki Special Bottle Collection 2013 "Aritayaki", 21 Year	43%	240
□ Hibiki Special Bottle Collection 2013 "Kutaniyaki", 21 Year	43%	240
□ Hibiki Special Bottle Collection 2015 "Aritayaki", 30 Year	43%	420
□ Suntory "The Peninsula" 2014	43%	325

Japan, Japanese Single Malt

□ Karuizawa "Cask Strength 5th Release"	61%	275
□ Karuizawa "Cask Strength 6th Release"	59.5%	275
□ Karuizawa "Cask Strength 7th Release"	60.5%	275
□ Karuizawa "Cask Strength 8th Release"	60.1%	275
□ Karuizawa "Cask Strength 9th Release"	59.6%	275
□ Karuizawa "Cask Strength 10th Release"	59.7%	275
□ Karuizawa "Cask Strength 11th Release"	59.2%	275
□ Karuizawa "Cask Strength 12th Release"	59.2%	275
□ Karuizawa "Cask Strength 13th Release"	59.6%	275
□ Karuizawa "Cask Strength 14th Release"	59.7%	275
□ Karuizawa "Geisha" Single Cask Sherry Butt 16 Year No. 125	61.5%	305
□ Karuizawa "Geisha" Single Cask Sherry Butt 17 Year No. 7436	60.6%	305
□ Karuizawa "Geisha" Single Cask Sherry Butt 26 Year No. 7402	60.6%	360
□ Karuizawa "Black" Single Cask Sherry Butt 16 Year No. 2332	58.5%	305
□ Karuizawa "Blue" Single Cask Sherry Butt 16 Year No. 7221	59%	305
□ Karuizawa "Green" Single Cask Sherry Butt 15 Year No. 2339	61.1%	305
□ Karuizawa "Pink" Single Cask Sherry Butt 17 Year No. 895	58.6%	305
□ Karuizawa "Noh" Single Cask Sherry Butt 15 Year No. 2326	62.2%	345
□ Karuizawa "Noh" Single Cask Sherry Butt 21 Year No. 6149	63.6%	420
□ Karuizawa "Noh" Single Cask Sherry Butt 22 Year No. 7460	62.3%	450
Yamazaki 12 Year	43%	44
Yamazaki 18 Year	43%	140
□ Yamazaki "Limited Edition" 2014	43%	105
□ Yamazaki "Limited Edition" 2015	43%	105
□ Yamazaki "Limited Edition" 2016	43%	105

Scotland, Blended Scotch

□ Ballantine's 12 Year (1980s)	43%	80
□ Ben Alder Finest Scotch Whisky (1990s)	40%	85
□ Black And White "Buchanan's Choice" (1960s)	43%	125
□ Black Barrel Single Grain (2000s)	40%	85
□ Black Jack Rare Old Scotch Whisky (1980s)	40%	85
□ Blairmhor "Selected Quality" Pure Malt (1980s)	40%	85
□ Buchanan's Reserve 12 Year (1970s)	43%	85
□ Calvary (1970s)	40%	80
□ Campbeltown Loch (2009)	40%	80
□ Carnaby St. 4 Year (1970s)	43%	80
□ Chequers 12 Year (1980s)	40%	80
Chivas Regal 12 Year	40%	20
Chivas Regal 21 Year "Royal Salute"	40%	50
□ Clan Robertson (1960s)	43%	80
□ Clanroy (1970s)	43%	80
□ Compass Box "Asyla" (First Release)	43%	85
Compass Box "Asyla"	43%	16
□ Compass Box "Eleuthera" All Malt (First Release)	46%	85
Compass Box "Great King Street Artist's Blend"	43%	16
Compass Box "The Spice Tree"	46%	20
□ Cutty Sark (1980s)	40%	80
□ Dalvegan Old Highland Malt 10 Year (1970s-1980s)	43%	80
□ Defender "From Those Who Build The World"	40%	85
□ Dewar's White Label (1970s)	40%	80
□ Glen Dowan Special Reserve	40%	80
□ Grand Old Parr 12 Year (1980s)	43%	80
□ Glen Orchy Pure Malt 8 Year (2005)	40%	85
□ Glenfairn Pure Malt 8 Year (1980s)	40%	85
□ Grant's (1980s)	40%	85
□ Highland Fusilier Finest 8 Year (1970s)	40%	80
□ Highland Queen (1970s)	43%	80
□ His Excellency Special Reserve	43%	80
□ House of Scotland Special Reserve 12 Year (1970s)	43%	80
□ Inverness Cream (1980s)	43%	80
□ Islay Mist 8 Year (1990s)	40%	85
□ Isle Of Skye 8 Year (2009)	40%	85
Johnnie Walker Blue Label	40%	50
Johnnie Walker Gold Label	40%	20
□ Kintore	43%	80
□ Macleay Duff "Antique" (1980s)	40%	80
□ Macphail's Pure Malt 15 Year (1980s)	40%	80
Monkey Shoulder Triple Malt	40%	16
□ The Antiquary "Millennium Edition" 21 Year	43%	105

Scotland, Single Malt Scotch

□ Aberlour-Glenlivet Campbell's Distillery Ltd. 8 Year (1965)	50%	135
Ardbeg 10 Year	46%	22
Balvenie DoubleWood 12 Year	40%	20
Balvenie PortWood 21 Year	40%	80
□ Blairfindy 40 Year "Blairfindy Raw Cask" Blackadder No.4711	55%	300
Bowmore 12 Year	40%	18
Bowmore 25 Year	43%	150
□ Bowmore "Bicentenary For Fecchio & Frassa"	56.2%	475
□ Bowmore Gold Label OB 12 Year (1980s)	43%	135
□ Bowmore Gold Label "De Luxe" OB (1980s)	43%	135
Bunnahabhain 12 Year	46.3%	24
□ Clynelish-Brora 12 Year Ainslie & Heilbron Ltd.	43%	250
□ Dalmore 8 Year Black Label (1970s)	43%	250
Dalwhinnie 15 Year	43%	20
□ Dufftown 13 Year James Macarthur's Reserve	59.6%	80
□ Glen Avon 5 Year Fine & Old	40%	80
□ Glen Grant 10 Year (1958)	45%	250
□ Glendronach 19 Year "The Birds Series" (1990)	43%	390
Glenfidich 15 Year Solera Reserva	40%	32
Glenfidich 21 Year	40%	76
□ Glenfidich 8 Year "Straight Malt" (1960s)	43%	305
Glenlivet 12 Year	40%	22
Glenlivet 18 Year	43%	48
□ Glenlivet "Special Export Reserve" George & J. G. Smith Ltd	43%	250
□ Glenkeith-Glenlivet 12 Year "The Flower Series" Duthie For Samaroli (1969)	46%	250
□ Glenmorangie "Pure Old" Sherry Cask Finish (1963)	43%	445
□ Glenmorangie Single Barrel Vintage Cask (1994)	46%	265
□ Highland Park 12 Year "From The Islands Of Orkney"	43%	195
Highland Park 18 Year	43%	44
□ Inchgower "From The House Of Bells" 12 Year	43%	135
Lagavulin 16 Year	43%	26
Lagavulin Distillers Edition Double Matured	43%	36
Laphroaig 10 Year	40%	18
□ Laphroaig 15 Year (2005)	43%	145
Laphroaig 18 Year	48%	48
□ Longmorn 16 Year Natural Cask Strength	58.5%	300
□ Macallan 8 Year (1970s)	43%	175
□ Macallan 10 Year (1970s)	43%	190
□ Macallan 12 Year (1970s)	43%	165
Macallan 12 Year	43%	26
Macallan 18 Year	43%	60
□ Macallan 25 Year "Anniversary Malt Series" (1991)	43%	445
□ Macallan 30 Year Blue Label Sherry Oak	43%	505

□ Macallan 12 Year "Official Whisky Of Bicentenary Of French Revolution" (1989)	43%	255
□ Macallan 25 Year "Royal Marriage 1948 & 1961 Charles & Diana" (1981)	43%	475
□ Macallan "Special Reserve" 1st Edition Label (1985)	43%	505
□ Macallan Vintage 18 Year (1956)	46%	550
□ Macallan Vintage 18 Year (1957)	46%	550
□ Macallan Vintage 18 Year (1958)	46%	550
□ Macallan Vintage 18 Year (1959)	46%	550
□ Macallan Vintage 18 Year (1960)	46%	550
□ Macallan Vintage 18 Year (1961)	46%	475
□ Macallan Vintage 18 Year (1962)	46%	475
□ Macallan Vintage 18 Year (1963)	43%	475
□ Macallan Vintage 18 Year (1964)	43%	475
□ Macallan Vintage 18 Year (1965)	43%	475
□ Macallan Vintage 18 Year (1966)	43%	475
□ Macallan Vintage 18 Year (1967)	43%	460
□ Macallan Vintage 18 Year (1968)	43%	460
□ Macallan Vintage 18 Year (1969)	43%	460
□ Macallan Vintage 18 Year (1970)	43%	460
□ Macallan Vintage 18 Year (1971)	43%	460
□ Macallan Vintage 18 Year (1972)	43%	445
□ Macallan Vintage 18 Year (1973)	43%	445
□ Macallan Vintage 18 Year (1974)	43%	445
□ Macallan Vintage 18 Year (1975)	43%	445
□ Macallan Vintage 18 Year (1976)	43%	360
□ Macallan Vintage 18 Year (1977)	43%	360
□ Macallan Vintage 18 Year (1978)	43%	360
□ Macallan Vintage 18 Year (1979)	43%	360
□ Macallan Vintage 18 Year (1980)	43%	360
□ Macallan Vintage 18 Year (1981)	43%	300
□ Macallan Vintage 18 Year (1982)	43%	300
□ Macallan Vintage 18 Year (1984)	43%	300
□ Macallan Vintage 18 Year (1985)	43%	300
□ Macallan Vintage 18 Year (1986)	43%	300
□ Millburn 11 Year "The Flower Series" Duthie For Samaroli (1970s)	46%	250
Mortlach 15 Year	43%	26
Oban 14 Year	43%	24
Old Malt Arran 1996 18 Year	50%	44
Old Pulteney 17 Year	46%	35
Springbank 15 Year	46%	26
□ Springbank 5 Year "Black Label" (1970s)	43%	230
□ Springbank 15 Year "Black Label" (1970s)	46%	265
□ Strathisla 37 Year "Licensed Bottling" Gordon & MacPhail (2011)	43%	350
□ Strathisla-Glenlivet 15 Year (Bottled For Pinerolo Italy)	40%	245
Talisker 10 Year	45.8%	20
□ Talisker 30 Years Old (1953)	40%	300
□ Teaninich 22 Years "The Bouquet Series" Samaroli (1959)	46%	420

BRANDY

Laird's 100 Proof Straight Applejack	40%	18
Clés des Ducs Millésimé 1992 Armagnac	40%	32
L'Encantada 25 Year Old Armagnac	49.5%	24
Cardenal Mendoza Brandy	40%	16
Comte Louise de Lauriton 2004 Domfrontais Calvados	40%	20
Christian Drouin 15 Year Calvados	40%	18
Daron Fine Calvados	40%	16
Daron XO Calvados	40%	20
Castarde VSOP	40%	22
Hennessy XO	40%	70
□ Hennessy VSOP (1960s)	42%	187
□ Hennessy XO Cognac (1970s)	40%	230
Hine Cigar Reserve Cognac	40%	50
Martell Cordon Bleu Cognac	40%	60
□ Martell VOP "3 Stars" (1960s)	40%	205
Pierre Ferrand 1840 Cognac	45%	16
Pierre Ferrand Abel 45 Year Cognac	40%	76
Pierre Ferrand Réserve 20 Year Cognac	40%	28
□ Remy Martin Fine Champagne VSOP Cognac (1960s)	40%	225
□ Remy Martin Louis XIII (1980s)	40%	360
Remy Martin VSOP Cognac	40%	26
Remy Martin XO Cognac	40%	66
Luxardo Williams Pear Brandy	40%	16
St. George Raspberry Eau de Vie Brandy	40%	16
Cocchi Grappa	40%	16
Nardini Riserva Grappa	50%	18
Encanto Barkeep's Whimsy Pisco	40.5%	16
Waqar Pisco	40%	16

SUGARCANE

Leblon Cachaca	40%	16
Bacardi Carta Blanca	41.2%	16
Caña Brava Rum	41.2%	16
Havana Club 3 Year Rum	40%	16
Plantation 3 Stars White Rum	41.2%	16
Bacardi 8 Rum	40%	16
Diplomático Ambassador Rum	47%	48
Diplomático Mantuano Rum	40%	16
Diplomático Reserva Exclusiva Rum	40%	18
Diplomático Single Vintage 2002 Rum	43%	26
El Dorado 12 Year Rum	40%	22
□ El Dorado 15 Year Rum	43%	24
Gosling's Black Seal Rum	40%	16
Havana Club 7 Year Rum	40%	16
□ Kill Devil 14 Year Barbados Four Square 2001 Rum	46%	40
Kill Devil 10 Year Belize Travellers 2005 Rum	46%	36
Plantation Grande Réserve 5 Year Rum	40%	16
Plantation Original Dark Rum	40%	16
□ Plantation Jamaica 2002 Single Island Rum	42%	16
Plantation "Proof & Co. Private Cask" Panama 8 Year Rum	43%	20
Ron Zacapa Centenario 23 Rum	40%	18
Santa Teresa 1796 Rum	40%	18
Wry & Nephew Overproof Rum	63%	26
Foursquare Spiced Rum	37.5%	16
Koko Kanu Coconut Rum	37.5%	16
Plantation Pineapple Stiggin's Fancy Rum	40%	16
The Kraken Spiced Rum	40%	16

AGAVE

Alipus San Andres Blanco Mezcal	47.7%	16
Alipus San Juan del Rio Mezcal	47.9%	16
Del Maguey Vida Mezcal	42%	18
Del Maguey Chichicapa Mezcal	46%	26
Derrumbes Mezeal	46%	20
Los Siete Misterios Espadin Mezcal	46.5%	22
Los Siete Misterios Tobalan Mezcal	47%	26
Los Danzantes Añejo Mezcal	43%	22
Los Danzantes Arte 2014 Mezcal	47%	18
Los Danzantes Reposado Mezcal	43%	18
Mezcal Derrumbes Michoacan Mezcal	45.7%	20
Montelobos Joven Mezcal	43.2%	22
□ ArteNOM 1146 Añejo Tequila	40%	20
ArteNOM 1414 Reposado Tequila	40%	16
ArteNOM 1549 Organic Blanco Tequila	40%	16
Cabeza Tequila	43%	18
□ Don Fulano Anejo Tequila	40%	20
Don Fulano Blanco Fuerte Tequila	50%	18
Don Fulano Reposado Tequila	40%	18
Don Julio Reposado Tequila	40%	16
□ Fuenteseca 12 Year Tequila	45%	60
Ocho Reposado Tequila	40%	18
Patrón Silver Tequila	40%	20
Tapatio Blanco Tequila	40%	16

VODKA

Absolut Elyx Vodka	42.3%	20
Aylesbury Duck Vodka	40%	16
Belvedere Vodka	40%	18
Death's Door Vodka	40%	16
Grey Goose Vodka	40%	18
Sipsmith Sipping Vodka	40%	16
Stolichnaya Elit Vodka	40%	24
Vestal Vodka	40%	16

ABSINTHE

Pernod Absinthe	68%	26
St. George Verte Absinthe	60%	26
Zufanek Absinthe	70%	24

VERMOUTH

Cinzano Dry 1940s	16%	90
La Quintinye Royal Extra Dry Vermouth	17%	14
Mancino Secco Dry Vermouth	18%	14
Martini Extra Dry Vermouth	15%	10
Martini & Rossi 1970s Dry White Vermouth	18.5%	49
Noilly Prat Dry Vermouth	18%	12
□ Noilly Prat 1930s Dry Vermouth	16%	120
□ Noilly Prat 1970s Extra Dry Vermouth	18%	120
Cocchi Americano Vermouth	16.5%	14
Cocchi Americano Rosa Vermouth	16.5%	14
Lillet Blanc Vermouth	17%	14
La Quintinye Royale Blanc Vermouth	16%	14
Mancino Bianco Ambrato Vermouth	16%	14
Carpano Antica Formula Vermouth	16.5%	12
Cocchi di Torino Vermouth	16%	14
La Quintinye Royale Rouge	16.5%	14
Mancino Rosso Amaranto Vermouth	17%	14
Martini Rosso Vermouth	15%	10
Martini & Rossi 1940s Red Vermouth	16%	115
Punt e Mes Vermouth	16%	10

APERITIF

Aperol	11%	12
Campari	25%	12
Campari 1960s	25%	72
Dubonet	15%	12
Pernod	40%	16
Suze Gentiane	15%	10
Linie Aquavit	41.5%	16

DIGESTIF

Amaro Montenegro	23%	12
Averna	29%	12
Becherovka	38%	12
Branca Menta	28%	12
Cynar	16.5%	12
Fernet Branca	39%	12

LIQUEUR

Mathilde Cassis Liqueur	16%	16
Sipsmith Sloe Gin Liqueur	29%	18
St. George Raspberry Liqueur	20%	16
Ferrand Dry Curaçao	40%	16
Grand Marnier	40%	16
Luxardo Limoncello	27%	16
□ Picon Biere a L'Orange	18%	12
Vintage Orange Curaçao 1930s	25%	160
Cointreau Liqueur de Camomille	30%	16
St. Germain Elderflower Liqueur	20%	16

Pimm's No. 1	25%	16
Benedictine	40%	16
Benedictine 1970s	35%	30
Bentianna	13%	16
Chartreuse Elixir Vegetal	69%	28
Chartreuse Green	47%	18
Chartreuse Yellow	40%	16
Chartreuse V.E.P. Green	54%	24
Chartreuse V.E.P. Yellow	42%	22
Drambuie	40%	16
Drambuie 1970s	40%	30
Picon Amer	21%	16
Tempus Fugit Crème de Menthe	28%	16
Luxardo Sambuca Dei Cesari	38%	14
Amaretto Disaronno	28%	20
Tia Maria Coffee Liqueur	20%	18
Galliano	42.3%	14
Luxardo Albicocca Apricot Brandy	30%	14
Luxardo Maraschino Liqueur	32%	14
Luxardo Sangue Morlacco Cherry Brandy	30%	14
Mathilde Pêche Liqueur	18%	14
Mathilde Poire Liqueur	18%	14
St. George Spiced Pear Liqueur	20%	14



FINE WINES OF THE WORLD

These bottles represent our commitment and appreciation for the finest things in life.
Objects of beauty that stand the test of time.

White Selection

Domaine Pellehaut "Harmonie de Gascogne Blanc" Côtes de Gascogne, France	Ugni Blanc, Colombard	2015	90
Hirsch Kammerner Heiligenstein Grüner Veltliner, Kamptal DAC, Austria	Grüner Veltliner	2014	90
André & Michel Quenard Chignin Bergeron "Le Grand Rebossan" Savoie, France	Rousanne	2014	95
Dog Point Sauvignon Blanc Marlborough, New Zealand	Sauvignon Blanc	2015	100
Schmelz Pichl Point Grüner Veltliner Smaragd, Wachau, Austria	Grüner Veltliner	2013	100
Louis Moreau Chablis Premier Cru Les Fourneaux Burgundy, France	Chardonnay	2014	100
Catherine & Pierre Breton Vouvray "La Dilettante" Sec Loire Valley, France	Chenin Blanc	2011	100
Domaine Rolet Côtes du Jura Jura, France	Chardonnay	2011	105
F.X. Pichler Loibner Klostersatz Grüner Veltliner Federspiel, Wachau, Austria	Grüner Veltliner	2013	105
Domaine aux Moines, Savennieres Roche aux Moines Loire Valley, France	Chenin Blanc	1999	110
Domaine aux Moines, Savennieres Roche aux Moines Loire Valley, France	Chenin Blanc	1998	110
Domaine aux Moines, Savennieres Roche aux Moines Loire Valley, France	Chenin Blanc	1992	120
A. et P. de Villaine Bouzeron, Burgundy, France	Aligoté	2013	120
Ramonet Bourgogne Aligote Burgundy, France	Aligote	2014	120
Lucy Margaux "Gris de Florette" Adelaide Hills, Australia	Pinot Gris	2016	120
Schmelz "Best Of" Grüner Veltliner Smaragd, Wachau, Austria	Grüner Veltliner	2012	120
Hirsch Zöbinger Gaisberg 1ÖTW Riesling Reserve, Kamptal DAC, Austria	Riesling	2010	120
Hirsch Zöbinger Gaisberg 1ÖTW Riesling Reserve, Kamptal DAC, Austria	Riseling	2003	130

Domaine Zind-Humbrecht "Terroir d'Alsace" Alsace, France	Riesling	2011	130
Domaine des Roches Neuves "L'Insolite" Loire Valley, France	Chenin Blanc	2011	130
Holdvölgy "Becsek" Hárslevelú Tokaj-Hegyalja Mád, Hungary	Hárslevelú	2009	135
Marchesi de Frescobaldi - Castello di Pomino "Benefizio" Pomino Bianco Riserva Tuscany, Italy	Chardonnay	2014	140
Weingut Dönnhoff Roxheimer Höllன்பုဆု Riesling Nahe, Germany	Riesling	2013	140
Vinoterra Kisi Kakheti, Georgia	Kisi	2012	145
Vinoterra Kisi Kakheti, Georgia	Kisi	2013	145
Alain Cailbourdin Pouilly-Fumé "Triptyque" Loire Valley, France	Sauvignon Blanc	2012	150
Domaine aux Moines Savennieres Roche aux Moines Loire Valley, France	Chenin Blanc	2013	150
Jean-Paul & Benoît Droin Chablis 1er Cru Montée de Tonnerre, Burgundy, France	Chardonnay	2011	150
Paul Pillot Saint Aubin 1er Cru Les Charmois, Burgundy, France	Chardonnay	2013	150
Domaine Faiveley Mercurey "Clos Rochette" Burgundy, France	Chardonnay	2012	150
Domaine Méo-Camuzet Hautes-Côtes de Nuits "Clos Saint-Philibert Blanc" Burgundy, France	Chardonnay	2009	155
Kumeu Rivers "Hunting Hill" Chardonnay Kumeu, New Zealand	Chardonnay	2014	155
Château Lange Reglat Sauternes Bordeaux, France	Sauvignon Blanc Semillon	2008	160
Jean-Paul & Benoît Droin Chablis 1er Cru Vaillons, Burgundy, France	Chardonnay	2013	150
Yves Cuilleron Condrieu "La Petite Côte" Rhône Valley, France	Viognier	2014	170
Domaine Rémi Jobard Meursault "Les Narvaux" Burgundy, France	Chardonnay	2009	170
Patrick Piuze Chablis Grand Cru Blanchots Burgundy, France	Chardonnay	2015	240
Yves Cuilleron Condrieu "Ayguets" Liqueureux Rhône Valley, France	Viognier	2006	260
Hirsch Vineyards Sonoma Coast, America	Chardonnay	2015	300
Didier Dagueneau "Pur Sang" Pouilly-Fumé Loire Valley, France	Sauvignon Blanc	2007	500
Didier Dagueneau "Silex" Pouilly Fumé Loire Valley, France	Sauvignon Blanc	2007	550

Red Selection

Domaine de la Grand' Cour Fleurie "Clos de la Grand Cour" Beaujolais, France	Gamay	2014	90
Catherine & Pierre Breton Bourgeil "Trinch" Loire Valley, France	Cabernet Franc	2015	100
Domaine Jean-Marc Burgaud Morgon "Côte du Py" Beaujolais, France	Gamay	2014	100
Weingut Hannes Reeh "Unplugged" Neusiedlersee, Austria	Zweigelt	2013	105
Azienda Agricola Masciarelli Montepulciano d'Abruzzo "Marina Cvetic" Abruzzo, Italy	Montepulciano	2013	115
Fattoria Nittardi Chianti Classico "Casanuova di Nittardi" Tuscany, Italy	Sangiovese	2014	115
Jamsheed Harem "Ma Petite Francine" Yarra Valley, Australia	Cabernet Franc	2016	130
Paul Pillot Chassagne-Montrachet Rouge Vieilles Vignes, Burgundy, France	Pinot Noir	2013	140
Pierre & Jérôme Coursodon Saint-Joseph "L'Olivaie" Rhône Valley, France	Syrah	2015	140
Weingut Bernhard Huber Malterdinger Spätburgunder Baden, Germany	Pinot Noir	2012	145
Domaine Gauby Calcinaires Rouge, Roussillon, France Roussillon, France	Mouvedre, Carignan	2011	150
Bodegas Salentein Single Vineyard Mendoza, Argentina	Malbec	2013	150
John Duval Wines "Plexus" Barossa Valley, Australia	Shiraz, Grenache, Mourvèdre	2013	155
Alain Voge Saint-Joseph "Les Vinsonnes" Rhône Valley, France	Syrah	2011	160
Ridge Vineyards "Lytton Springs" Dry Creek Valley, USA	Zinfandel, Petite Sirah,	2012	165
Château de la Maltroye Chassagne-Montrachet 1er Cru Clos du Château de la Maltroye Rouge, Burgundy, France	Pinot Noir	2013	170
R. López de Heredia Viña Tondonia Reserva Rioja, Spain	Tempranillo, Graciano	2004	170

Cruse Wine Charles Heintz Vineyard, Sonoma USA	Syrah	2015	170
Cruse Wine Alder Springs Vineyard, Mendocino, USA	Tannat	2015	170
Pierre Gonon St Joseph, Rhône Valley, France	Syrah	2015	170
Azienda Agricola Elio Altare Barolo La Morra Piemont, Italy	Nebbiolo	2009	175
Biondi-Santi Tenuta Greppo Rosso di Montalcino DOC Tuscany, Italy	Sangiovese	2013	180
Chateau Musar Bekaa Valley, Lebanon	Cabernet Sauvignon, Carignan, Cinsault	2001	180
Olivier Hilaire Chateauneuf-du Pape, Rhône Valley, France	Grenache, Syrah	2011	180
Château Gravet Renaissance Saint-Émilion Grand Cru Bordeaux, France	Bordeaux Blend	2008	190
William Downie "Mornington Peninsula", Mornington Peninsula, Australia	Pinot Noir	2015	190
Arnoux-Lachaux Nuits-Saint-Georges, Burgundy, France	Pinot Noir	2011	200
Alain Voge Cornas "Les Vieilles Vignes" Rhône Valley, France	Syrah	2011	240
Hudelot-Noellat Chambolle-Musigny, Burgundy, France	Pinot Noir	2012	210
Domaine Tempier Bandol, Provence, France	Mourvèdre, Grenache	2013	220
Alain Voge Cornas, "Les Vieilles Vignes" Rhône Valley, France	Syrah	2011	240
Francois Bertheau Chambolle-Musigny, Burgundy, France	Pinot Noir	2013	240
Gaja Dagromis Barolo, Piedmont Italy	Nebbiolo	2012	300
Arnoux-Lachaux Nuits-Saint-Georges 1er Cru Clos des Corvées Pagets Burgundy, France	Pinot Noir	2007	310
Chateau La Tour a Pomerol, Bourdeaux France	Bordeaux Blend	2007	350
Biondi-Santi Tenuta Greppo Brunello di Montalcino DOCG "Annata" Tuscany, Italy	Sangiovese	2009	380
Biondi-Santi Tenuta Greppo Brunello di Montalcino DOCG "Annata" Tuscany, Italy	Sangiovese	2007	400

Coteaux Champenois Collection

Pierre Paillard Bouzy Grand Cru Rouge “Les Mignottes” Coteaux Champenois Champagne, France	Pinot Noir	2012	145
Bereche & Fils Ormes Rouge “Les Montees” Coteaux Champenois, Champagne, France	Pinot Noir, Pinot Meunier	2014	240
Bollinger Aÿ Grand Cru Rouge “La Côte Aux Enfants” Coteaux Champenois Champagne, France	Pinot Noir	2013	260
Larmandier Bernier Vertus Rouge Coteaux Champenois, Champagne, France	Pinot Noir	2012	290
Egly Ouriet Ambonnay Grand Cru Rouge “Cuvée de Grands Cotes” Coteaux Champenois, Champagne, France	Pinot Noir	2012	380

White Collection

□ Domaine Joseph Drouhin Montrachet Grand Cru “Marquis de Laguiche”	2008	980
□ Château Haut-Brion Blanc	1988	1480
□ Château Haut-Brion Blanc	1990	1680
□ Château Haut-Brion Blanc	1985	2280

Red Collection

□ Château Cheval Blanc	1982	2300
□ Château Cheval Blanc	1985	1200
□ Château Cheval Blanc	1990	2700
□ Château Petrus	1975	5150
□ Château Petrus	1989	9800
□ Château Petrus	2004	5000
□ Château Petrus	2007	2500

The □ symbol denotes special bottles from the Family Collection.